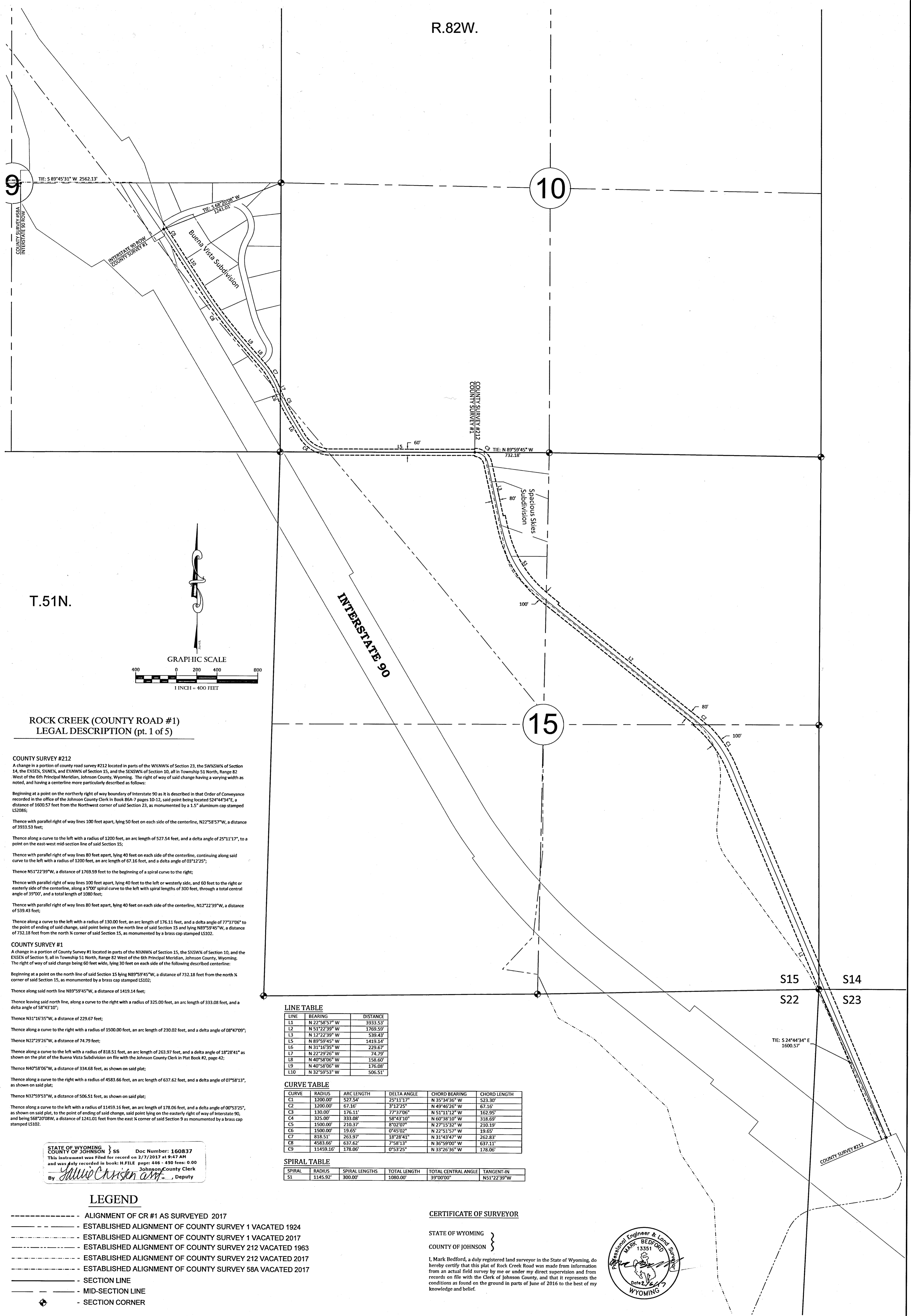


R.82W.

10

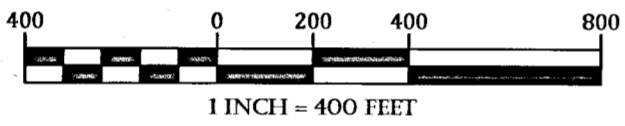
15

S15 S14
S22 S23



T.51N.

GRAPHIC SCALE



**ROCK CREEK (COUNTY ROAD #1)
LEGAL DESCRIPTION (pt. 1 of 5)**

COUNTY SURVEY #212

A change in a portion of County road survey #212 located in parts of the W1/4NW1/4 of Section 23, the SW1/4SW1/4 of Section 14, the E1/2SE1/4, SW1/4NE1/4, and E1/4NW1/4 of Section 15, all in Township 51 North, Range 82 West of the 6th Principal Meridian, Johnson County, Wyoming. The right of way of said change having a varying width as noted, and having a centerline more particularly described as follows:

Beginning at a point on the northerly right of way boundary of Interstate 90 as it is described in that Order of Conveyance recorded in the office of the Johnson County Clerk in Book 86A-7 pages 10-12, said point being located S24°44'34"E, a distance of 1600.57 feet from the Northwest corner of said Section 23, as monumented by a 1.5" aluminum cap stamped LS006;

Thence with parallel right of way lines 100 feet apart, lying 50 feet on each side of the centerline, N22°58'57"W, a distance of 3933.53 feet;

Thence along a curve to the left with a radius of 1200 feet, an arc length of 527.54 feet, and a delta angle of 25°11'17", to a point on the east-west mid-section line of said Section 15;

Thence with parallel right of way lines 80 feet apart, lying 40 feet on each side of the centerline, continuing along said curve to the left with a radius of 1200 feet, an arc length of 67.16 feet, and a delta angle of 03°12'25";

Thence N51°22'39"W, a distance of 1769.59 feet to the beginning of a spiral curve to the right;

Thence with parallel right of way lines 100 feet apart, lying 40 feet to the left or westerly side, and 60 feet to the right or easterly side of the centerline, along a 500' spiral curve to the left with spiral lengths of 300 feet, through a total central angle of 39°00', and a total length of 1080 feet;

Thence with parallel right of way lines 80 feet apart, lying 40 feet on each side of the centerline, N12°22'39"W, a distance of 539.43 feet;

Thence along a curve to the left with a radius of 130.00 feet, an arc length of 176.11 feet, and a delta angle of 77°37'06" to the point of ending of said change, said point being on the north line of said Section 15 and lying N89°59'45"W, a distance of 732.18 feet from the north X corner of said Section 15, as monumented by a brass cap stamped LS102.

COUNTY SURVEY #1
A change in a portion of County Survey #1 located in parts of the N1/4NW1/4 of Section 15, the S1/4SW1/4 of Section 10, and the E1/2SE1/4 of Section 9, all in Township 51 North, Range 82 West of the 6th Principal Meridian, Johnson County, Wyoming. The right of way of said change being 60 feet wide, lying 30 feet on each side of the following described centerline:

Beginning at a point on the north line of said Section 15 lying N89°59'45"W, a distance of 732.18 feet from the north X corner of said Section 15, as monumented by a brass cap stamped LS102;

Thence along said north line N89°59'45"W, a distance of 1419.14 feet;

Thence leaving said north line, along a curve to the right with a radius of 325.00 feet, an arc length of 333.08 feet, and a delta angle of 58°43'10";

Thence N31°16'35"W, a distance of 229.67 feet;

Thence along a curve to the right with a radius of 1500.00 feet, an arc length of 230.02 feet, and a delta angle of 08°47'09";

Thence N22°29'26"W, a distance of 74.79 feet;

Thence along a curve to the left with a radius of 818.51 feet, an arc length of 263.97 feet, and a delta angle of 18°28'41" as shown on the plat of the Buena Vista Subdivision on file with the Johnson County Clerk in Plat Book #2, page 42;

Thence N40°58'06"W, a distance of 334.68 feet, as shown on said plat;

Thence along a curve to the right with a radius of 4583.66 feet, an arc length of 637.62 feet, and a delta angle of 07°58'13", as shown on said plat;

Thence N32°59'53"W, a distance of 506.51 feet, as shown on said plat;

Thence along a curve to the left with a radius of 11459.16 feet, an arc length of 178.06 feet, and a delta angle of 00°53'25", as shown on said plat, to the point of ending of said change, said point lying on the easterly right of way of Interstate 90, and being S68°20'08"W, a distance of 1241.01 feet from the east X corner of said Section 9 as monumented by a brass cap stamped LS102.

LINE TABLE

LINE	BEARING	DISTANCE
L1	N 22°58'57" W	3933.53'
L2	N 51°22'39" W	1769.59'
L3	N 12°22'39" W	539.43'
L4	N 89°59'45" W	1419.14'
L5	N 31°16'35" W	229.67'
L6	N 22°29'26" W	74.79'
L7	N 40°58'06" W	334.68'
L8	N 40°58'06" W	178.06'
L9	N 40°58'06" W	176.08'
L10	N 32°59'53" W	506.51'

CURVE TABLE

CURVE	RADIUS	ARC LENGTH	DELTA ANGLE	CHORD BEARING	CHORD LENGTH
C1	1200.00'	527.54'	25°11'17"	N 35°34'36" W	523.30'
C2	1200.00'	67.16'	3°12'25"	N 49°46'26" W	67.16'
C3	130.00'	176.11'	77°37'06"	N 51°11'12" W	162.95'
C4	325.00'	333.08'	58°43'10"	N 60°38'10" W	318.69'
C5	1500.00'	230.02'	8°47'09"	N 27°15'32" W	210.19'
C6	1500.00'	19.65'	0°45'02"	N 22°51'57" W	19.65'
C7	818.51'	263.97'	18°28'41"	N 31°43'47" W	262.83'
C8	4583.66'	637.62'	7°58'13"	N 36°59'00" W	637.11'
C9	11459.16'	178.06'	0°53'25"	N 33°26'36" W	178.06'

SPIRAL TABLE

SPIRAL	RADIUS	SPIRAL LENGTHS	TOTAL LENGTH	TOTAL CENTRAL ANGLE	TANGENT-IN
S1	11459.16'	300.00'	1080.00'	39°00'00"	N51°22'39"W

STATE OF WYOMING }
COUNTY OF JOHNSON } SS Doc Number: 160837
This instrument was filed for record on 2/7/2017 at 9:47 AM
and was recorded in book: H.F. FILE page: 446 - 450 feet: 0 00
By *Mark Bedford* Johnson County Clerk
Deputy

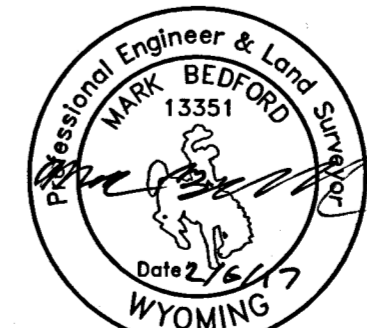
LEGEND

- ALIGNMENT OF CR #1 AS SURVEYED 2017
- ESTABLISHED ALIGNMENT OF COUNTY SURVEY 1 VACATED 1924
- ESTABLISHED ALIGNMENT OF COUNTY SURVEY 1 VACATED 2017
- ESTABLISHED ALIGNMENT OF COUNTY SURVEY 212 VACATED 1963
- ESTABLISHED ALIGNMENT OF COUNTY SURVEY 212 VACATED 2017
- ESTABLISHED ALIGNMENT OF COUNTY SURVEY 58A VACATED 2017
- SECTION LINE
- MID-SECTION LINE
- SECTION CORNER

CERTIFICATE OF SURVEYOR

STATE OF WYOMING }
COUNTY OF JOHNSON }

I, Mark Bedford, a duly registered land surveyor in the State of Wyoming, do hereby certify that this plat of Rock Creek Road was made from information from an actual field survey by me or under my direct supervision and from records on file with the Clerk of Johnson County, and that it represents the conditions as found on the ground in parts of June of 2016 to the best of my knowledge and belief.



**ROCK CREEK COUNTY ROAD #1
BEING PORTIONS OF COUNTY SURVEYS
#1 AND #212
RIGHT-OF-WAY**

PREPARED FOR:
JOHNSON COUNTY ROAD
AND BRIDGE DEPARTMENT
310 RAILROAD AVENUE
BUFFALO, WY 82834

**Bighorn
Surveying &
Engineering, LLC**
401 Fort Street Suite 4 Buffalo, WY 82834 (307) 684-7400 www.bighornsurveying.com

Rock Creek County Road #1
Being portions of County Surveys
#1 & #212 R/W

**ROCK CREEK (COUNTY ROAD #1)
LEGAL DESCRIPTION (pt. 2 of 5)**

COUNTY SURVEY #58A

A change in a portion of County Survey #58A located in parts of the NW/4 and SW/4 of Section 9, the NE/4, SW/4, NW/4, SW/4, NW/4, and NW/4 of Section 8, and NE/4 of Section 7, all in Township 51 North, Range 82 West of the 6th Principal Meridian, Johnson County, Wyoming. The right of way of said change having a varying width as noted and being a centerline to be parallel to the centerline of Johnson County Survey #58A.

Beginning at a point at the intersection of the westerly PCW of Interstate 90 and the east-west centerline of said road, a distance of 2502.13 feet from the east corner of said section 9, as monumented by a brass cap stamped 4202.

Thence with parallel right of way line 60 feet apart, 1/4 mile 30 feet on each side of the centerline, along said east-west centerline 425.51 feet, a distance of 4259.29 feet.

Thence N81°55'11"W, a distance of 37.23 feet to a point on the west line of said Section 8.

Thence with parallel right of way line 60 feet apart, 1/4 mile 30 feet on each side of the centerline, N81°55'11"W, a distance of 143.88 feet.

Thence N75°51'11"W, a distance of 50.90 feet.

Thence with parallel right of way line 80 feet apart, 1/4 mile 40 feet on each side of the centerline, along a curve to the right with a radius of 12041.74 feet, an arc length of 350.00 feet, and a delta angle of 79°49'57".

Thence N55°01'11"W, a distance of 163.60 feet.

Thence along a curve to the left with a radius of 1445.92 feet, an arc length of 300.00 feet, and a delta angle of 51°00'00".

Thence N64°32'00"W, a distance of 308.00 feet.

Thence N03°35'20"W, a distance of 36.00 feet.

Thence with parallel right of way line 60 feet apart, 1/4 mile 30 feet on each side of the centerline, N03°35'20"W, a distance of 203.00 feet.

Thence N42°38'37"W, a distance of 260.50 feet.

Thence N03°40'42"W, a distance of 137.03 feet to a point on the south line of said NW/4 of Section 8.

Thence with parallel right of way line 60 feet apart, 1/4 mile 30 feet on each side of the centerline, along a curve to the left with a radius of 340.60 feet, an arc length of 131.87 feet, and a delta angle of 53°44'25".

Thence N89°25'06"W, a distance of 255.07 feet.

Thence N89°16'04"W, a distance of 1241.82 feet.

Thence N88°31'07"W, a distance of 27.01 feet to the point of ending, said point being on the west line of said NW/4 of Section 7 and lying S65°55'43"E, a distance of 1795.46 feet from the north corner of said Section 7, as monumented by a 1.5" Aluminum cap stamped US5307.

COUNTY SURVEY #58B

A change in a portion of County Survey #58B located in parts of the NW/4 and NW/4 of Section 7, Township 51 North, Range 82 West of the 6th Principal Meridian, Johnson County, Wyoming. The right of way of said change having a varying width as noted and being a centerline to be parallel to the centerline of Johnson County Survey #58B.

Beginning at a point on the east line of said NW/4 of Section 7, a distance of 1795.46 feet from the north corner of said section 7, as monumented by a 1.5" Aluminum cap stamped US5307.

Thence N88°31'07"W, a distance of 222.79 feet.

Thence along a curve to the right with a radius of 144.36 feet, and a delta angle of 55°00'25".

Thence N03°23'44"W, a distance of 318.49 feet.

Thence N57°08'00"W, a distance of 103.90 feet to the point of ending, said point lying S17°42'02"W, a distance of 764.74 feet from the north corner of said Section 7, as monumented by a 1.5" Aluminum cap stamped US587.

Thence with parallel right of way line 80 feet apart, 1/4 mile 40 feet on each side of the centerline, along a curve to the right with a radius of 12041.74 feet, an arc length of 350.00 feet, and a delta angle of 79°49'57".

Thence N55°01'11"W, a distance of 163.60 feet.

Thence along a curve to the left with a radius of 1445.92 feet, an arc length of 300.00 feet, and a delta angle of 51°00'00".

Thence N64°32'00"W, a distance of 308.00 feet.

Thence N03°35'20"W, a distance of 36.00 feet.

Thence with parallel right of way line 60 feet apart, 1/4 mile 30 feet on each side of the centerline, N03°35'20"W, a distance of 203.00 feet.

Thence N42°38'37"W, a distance of 260.50 feet.

Thence N03°40'42"W, a distance of 137.03 feet to a point on the south line of said NW/4 of Section 8.

Thence with parallel right of way line 60 feet apart, 1/4 mile 30 feet on each side of the centerline, along a curve to the left with a radius of 340.60 feet, an arc length of 131.87 feet, and a delta angle of 53°44'25".

Thence N89°25'06"W, a distance of 255.07 feet.

Thence N89°16'04"W, a distance of 1241.82 feet.

Thence N88°31'07"W, a distance of 27.01 feet to the point of ending, said point being on the west line of said NW/4 of Section 7 and lying S65°55'43"E, a distance of 1795.46 feet from the north corner of said Section 7, as monumented by a 1.5" Aluminum cap stamped US5307.

LEGEND

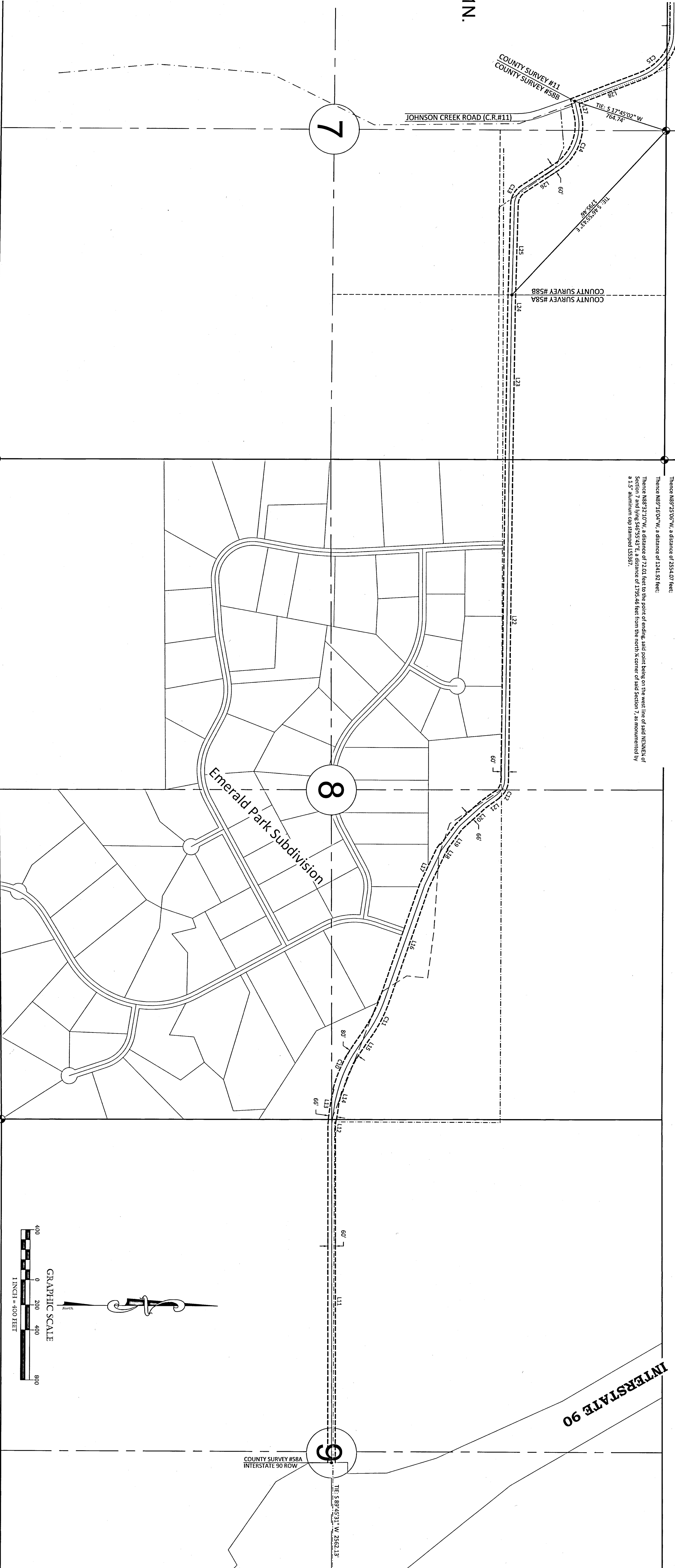
- ALIGNMENT OF CR #1 AS SURVEYED 2016
- ESTABLISHED ALIGNMENT OF COUNTY SURVEY 130 VACATED 2017
- ESTABLISHED ALIGNMENT OF COUNTY SURVEY 111
- ESTABLISHED ALIGNMENT OF COUNTY SURVEY 58A VACATED 2017
- ESTABLISHED ALIGNMENT OF COUNTY SURVEY 58B VACATED 2017
- SECTION LINE
- MID-SECTION LINE
- SECTION CORNER

LINE TABLE

LINE	BEARING	DISTANCE
L11	S89°45'31"W	2699.997
L12	N75°51'11"W	37.23
L13	N81°55'11"W	318.49
L14	N2°51'11"W	493.89
L15	N57°08'00"W	163.60
L16	N71°01'11"W	962.307
L17	N64°32'00"W	308.00
L18	N57°08'00"W	203.00
L19	N57°08'00"W	203.00
L20	N42°38'37"W	260.50
L21	N57°08'00"W	137.03
L22	N89°25'06"W	255.07
L23	N89°16'04"W	1241.82
L24	N88°31'07"W	27.01
L25	N03°35'20"W	722.79
L26	N03°35'20"W	318.49
L27	S76°57'08"W	103.90
L28	N17°01'11"W	501.73

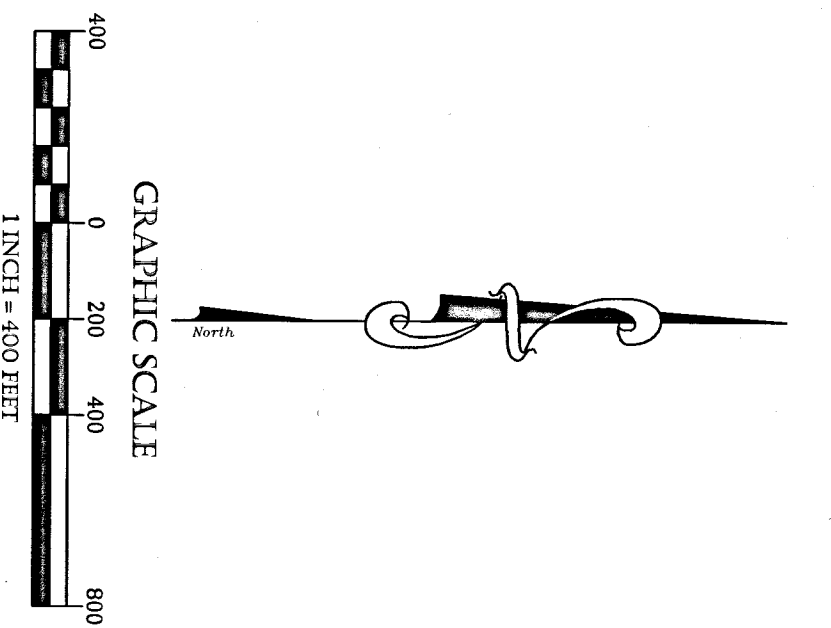
CURVE TABLE

CURVE	PC/PT	ARC LENGTH	DELTA ANGLE	CHORD BEARING	CHORD LENGTH
C10	1004.74	350.00	19°49'57"	N55°56'11"W	338.60
C11	1004.74	350.00	19°49'57"	N55°56'11"W	338.60
C12	146.60	131.87	53°44'25"	N89°25'06"W	255.07
C13	150.00	144.36	55°00'25"	N03°23'44"W	138.85
C14	400.00	486.26	69°39'06"	N64°31'38"W	456.87
C15	450.00	235.88	30°02'00"	N50°03'03"W	233.19
C16	350.27	221.42	38°24'47"	N70°16'25"W	217.30



R.82W.

T.51N.



SCALE: 1"=400'

PROJECT NO.: 12-23

DRAWING: 1223 CR 1 Rock Creek Rd

LAYOUT: 24" X 36"

SHEET: 2 / 5

**ROCK CREEK COUNTY ROAD #1
BEING PORTIONS OF COUNTY SURVEYS
#11, #58A AND #58B
RIGHT-OF-WAY**

PREPARED FOR:
JOHNSON COUNTY ROAD
AND BRIDGE DEPARTMENT
310 RAILROAD AVENUE
BUFFALO, WY 82834

Bighorn
Surveying &
Engineering, LLC

401 Fort Street Suite 4 Buffalo, WY 82834 (307) 684-7400 www.bighornsurveying.com

**ROCK CREEK (COUNTY ROAD #1)
LEGAL DESCRIPTION (pt. 3 of 5)**

COUNTY SURVEY #11

A change in County Survey #11 located in parts of the NE1/4 of Section 7, and the S1/2SW, NW1/4SW, and SW1/4SW, of Section 6, Township 51 North, Range 83 West, and the S1/2SW of Section 36, the S1/2 and SW1/4SW of Section 35, the NW1/4 and NE1/4SW of Section 34, the NE 1/4 NW 1/4 of Section 33, the S1/2 of Section 32, Township 51 North, Range 83 West of the 6th Principal Meridian, Johnson County, Wyoming. The right of way of said change being 60 feet wide, 30 feet on each side of the following described centerline:

Beginning at a point being 517.4507' W, a distance of 764.774 feet from the north corner of said Section 7, as monumented by a 1.5" aluminum cap stamped US5897;
Thence N120°03' W, a distance of 581.75 feet;
Thence along a curve to the left with a radius of 450.00 feet, an arc length of 735.88 feet, and a delta angle of 90°00'00";
Thence along a curve to the left with a radius of 330.27 feet, an arc length of 221.42 feet, and a delta angle of 38°24'47";
Thence N89°28'48" W, a distance of 153.14 feet;
Thence along a curve to the right with a radius of 375.00 feet, an arc length of 586.57 feet, and a delta angle of 89°37'15" to a point on the west line of said Section 6;
Thence along said west line N00°08'31" E, a distance of 1612.21 feet;
Thence along said west line along a curve to the left with a radius of 4000.00 feet, an arc length of 131.83 feet, and a delta angle of 02°53'18";
Thence N02°44'27" W, a distance of 847.38 feet;
Thence N65°24'09" W, a distance of 189.39 feet to the point of ending of said change, said point being N05°09'23" W, a distance of 559.66 feet from the west corner of said Section 6, as monumented by a 1.5" aluminum cap stamped US5857.

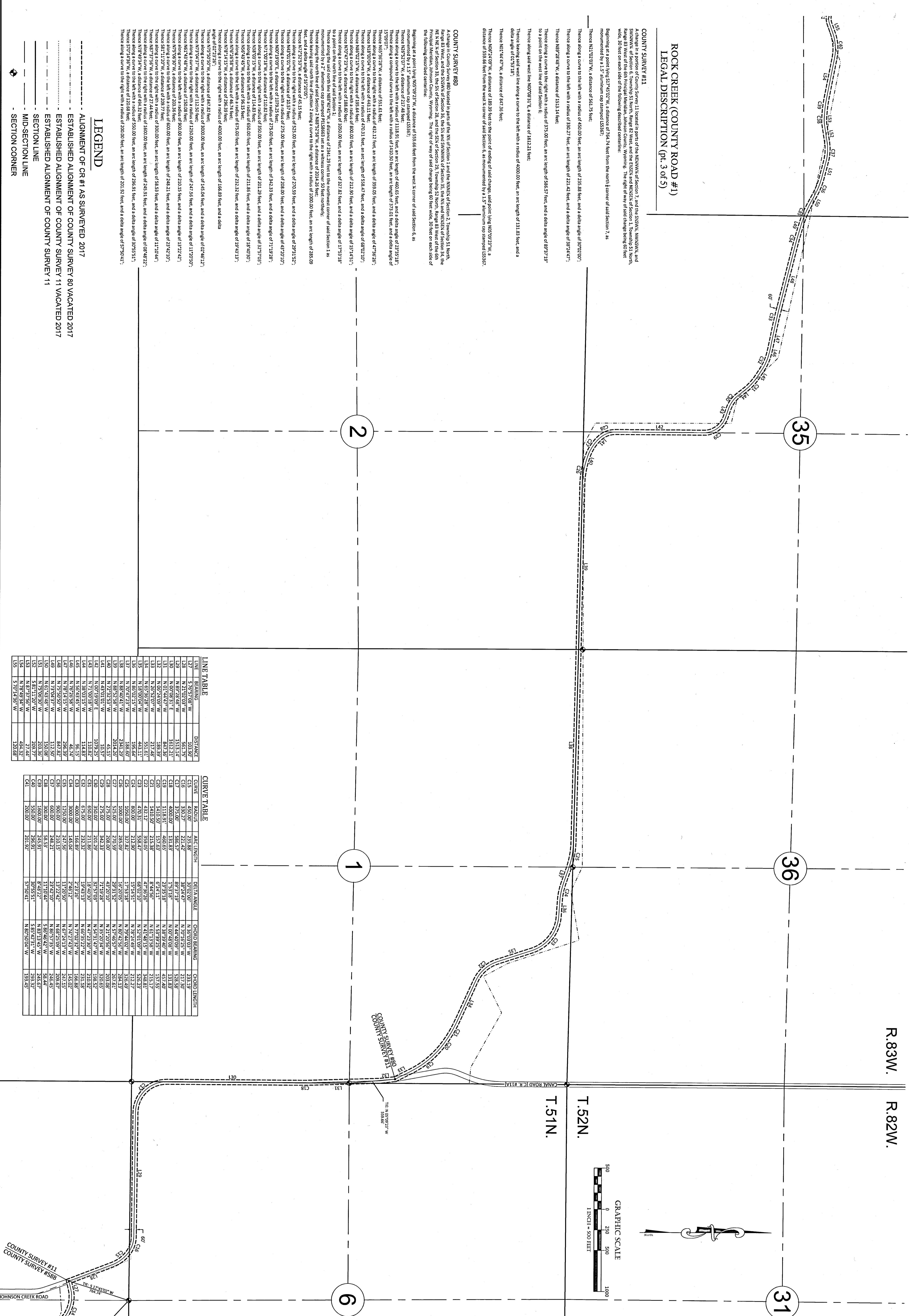
COUNTY SURVEY #80

A change in County Survey #80 located in parts of the NW1/4 of Section 1, and the NW1/4 of Section 2, Township 51 North, Range 83 West, and the S1/2SW of Section 36, the S1/2 and SW1/4SW of Section 35, the NW1/4 and NE1/4SW of Section 34, the NE 1/4 NW 1/4 of Section 33, the S1/2 of Section 32, Township 51 North, Range 83 West of the 6th Principal Meridian, Johnson County, Wyoming. The right of way of said change being 60 feet wide, 30 feet on each side of the following described centerline:

Beginning at a point being N05°09'23" W, a distance of 559.66 feet from the west corner of said Section 6, as monumented by a 1.5" aluminum cap stamped US5857;
Thence N05°09'23" W, a distance of 217.48 feet;
Thence along a curve to the left with a radius of 1118.51 feet, an arc length of 460.63 feet, and a delta angle of 23°53'18";
Thence along a curve to the left with a radius of 742.00 feet, an arc length of 379.02 feet, and a delta angle of 15°09'07";
Thence N65°36'28" W, a distance of 551.61 feet;
Thence along a curve to the right with a radius of 482.12 feet, an arc length of 339.05 feet, and a delta angle of 47°36'26";
Thence N86°02'12" W, a distance of 195.64 feet;
Thence along a curve to the left with a radius of 470.31 feet, an arc length of 558.47 feet, and a delta angle of 68°20'10";
Thence along a curve to the right with a radius of 880.00 feet, an arc length of 212.90 feet, and a delta angle of 15°14'53";
Thence along a curve to the left with a radius of 1050.00 feet, an arc length of 327.82 feet, and a delta angle of 17°53'18" to a point on the north line of said Section 1;
Thence along said north line of said Section 1, a distance of 724.129 feet to the northwest corner of said Section 1, as monumented by a 2" aluminum cap stamped US58663 set in a weathered rock 50 feet away;
Thence along said north line of said Section 2, a distance of 1489.5258' W, a distance of 2014.26 feet;
Thence along said north line of said Section 2, along a curve to the right with a radius of 1000.00 feet, an arc length of 285.09 feet, and a delta angle of 45.15 feet;
Thence along a curve to the right with a radius of 525.00 feet, an arc length of 270.59 feet, and a delta angle of 29°31'52";
Thence N43°10'11" W, a distance of 110.57 feet, an arc length of 275.00 feet, and a delta angle of 49°20'10";
Thence N00°71°09' E, a distance of 1079.35 feet;
Thence N07°50'57" W, a distance of 847.82 feet;
Thence N61°54'34" W, a distance of 1500.00 feet, an arc length of 2103.15 feet, and a delta angle of 13°22'42";
Thence N75°09'39" W, a distance of 720.33 feet;
Thence along a curve to the left with a radius of 600.00 feet, an arc length of 242.1 feet, and a delta angle of 23°42'10";
Thence N81°12'01" W, a distance of 209.17 feet;
Thence along a curve to the left with a radius of 300.00 feet, an arc length of 58.53 feet, and a delta angle of 11°10'45";
Thence N87°37'57" W, a distance of 27.44 feet;
Thence along a curve to the right with a radius of 1000.00 feet, an arc length of 246.51 feet, and a delta angle of 08°48'22";
Thence N89°39'31" W, a distance of 48.74 feet;
Thence N76°56'58" W, a distance of 67.00 feet, an arc length of 232.32 feet, and a delta angle of 19°43'15";
Thence N78°11'15" W, a distance of 28.39 feet;
Thence N71°00'18" W, a distance of 110.82 feet;
Thence N38°03'15" W, a distance of 114.83 feet;
Thence N36°53'52" W, a distance of 96.15 feet;
Thence N27°42'53" W, a distance of 296.39 feet;
Thence N26°41'13" W, a distance of 847.82 feet;
Thence N25°50'59" W, a distance of 112.50 feet;
Thence N24°33'38" W, a distance of 150.98 feet;
Thence N23°58'38" W, a distance of 209.77 feet;
Thence N23°09'34" W, a distance of 27.44 feet;
Thence N18°59'34" W, a distance of 494.32 feet;
Thence S70°14'58" W, a distance of 120.68 feet;
Thence along a curve to the right with a radius of 200.00 feet, an arc length of 201.91 feet, and a delta angle of 57°50'41";

LEGEND

- ALIGNMENT OF CR #1 AS SURVEYED 2017
- ESTABLISHED ALIGNMENT OF COUNTY SURVEY 80 VACATED 2017
- ESTABLISHED ALIGNMENT OF COUNTY SURVEY 11 VACATED 2017
- SECTION LINE
- MID-SECTION LINE
- SECTION CORNER



LINE TABLE

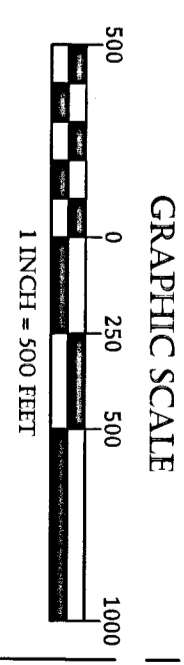
LINE	BEARING	DISTANCE
L27	S 65° 07' 08" W	103.80
L28	N 71° 00' 18" W	561.75
L29	N 89° 28' 48" W	153.14
L30	N 00° 08' 31" E	1612.21
L31	N 02° 44' 27" W	847.38
L32	N 65° 24' 09" W	189.39
L33	N 25° 50' 57" W	217.48
L34	N 85° 56' 58" W	551.61
L35	N 86° 02' 12" W	195.64
L36	N 43° 10' 11" W	110.57
L37	N 07° 50' 57" W	1079.35
L38	N 86° 52' 58" W	2014.26
L39	N 86° 52' 58" W	2014.26
L40	N 27° 42' 53" W	46.15
L41	N 26° 41' 13" W	296.39
L42	N 07° 50' 57" E	1079.35
L43	N 71° 00' 18" W	110.82
L44	N 38° 03' 15" W	114.83
L45	N 36° 53' 52" W	96.15
L46	N 27° 42' 53" W	296.39
L47	N 26° 41' 13" W	847.82
L48	N 25° 50' 59" W	112.50
L49	N 24° 33' 38" W	150.98
L50	N 23° 58' 38" W	209.77
L51	N 23° 09' 34" W	27.44
L52	N 18° 59' 34" W	494.32
L53	N 87° 37' 57" W	27.44
L54	N 78° 11' 15" W	494.32
L55	S 70° 14' 58" W	120.68

CURVE TABLE

CURVE	RADIUS	ARC LENGTH	DELT. ANGLE	CHORD BEARING	CHORD LENGTH
C15	450.00	735.88	90.00	N 05° 09' 23" W	450.00
C16	330.27	221.42	38.25	N 07° 16' 55" W	217.90
C17	375.00	586.57	89.37	N 00° 40' 09" W	528.58
C18	400.00	131.83	15.10	N 00° 48' 08" W	131.83
C19	470.31	558.47	68.20	N 08° 29' 40" W	571.40
C20	1410.50	152.63	6.25	N 01° 13' 58" W	152.63
C21	1410.50	212.90	8.84	N 01° 13' 58" W	212.90
C22	431.12	359.05	47.96	N 41° 48' 15" W	215.17
C23	470.31	558.47	68.20	N 52° 01' 09" W	526.23
C24	1050.00	327.82	17.53	N 02° 44' 27" W	327.82
C25	1050.00	327.82	17.53	N 02° 44' 27" W	327.82
C26	1000.00	285.09	15.07	N 02° 44' 27" W	285.09
C27	525.00	270.59	29.31	N 21° 20' 56" W	203.08
C28	1000.00	201.91	11.92	N 21° 20' 56" W	201.91
C29	525.00	270.59	29.31	N 47° 23' 50" W	210.92
C30	580.00	201.29	19.76	N 52° 01' 09" W	201.29
C31	650.00	211.86	18.40	N 47° 23' 50" W	210.92
C32	675.00	232.32	19.94	N 65° 35' 22" W	231.18
C33	400.00	168.89	23.28	N 77° 02' 32" W	168.89
C34	400.00	168.89	23.28	N 77° 02' 32" W	168.89
C35	1250.00	247.56	11.90	N 67° 24' 13" W	247.56
C36	900.00	248.21	13.27	N 67° 24' 13" W	248.21
C37	600.00	248.21	13.27	N 67° 24' 13" W	248.21
C38	300.00	58.53	3.36	N 86° 57' 35" W	58.53
C39	300.00	58.53	3.36	N 86° 57' 35" W	58.53
C40	580.00	209.77	19.76	N 52° 01' 09" W	209.77
C41	200.00	201.91	57.50	N 87° 37' 57" W	159.45

R.83W.
R.82W.

T.52N.
T.51N.



**ROCK CREEK COUNTY ROAD #1
BEING PORTIONS OF COUNTY SURVEYS
#11, #80, AND #58B
RIGHT-OF-WAY**

PREPARED FOR:
JOHNSON COUNTY ROAD
AND BRIDGE DEPARTMENT
310 RAILROAD AVENUE
BUFFALO, WY 82834

Bighorn
Surveying &
Engineering, LLC
401 Fort Street Suite 4 Buffalo, WY 82834 (307) 684-7400 www.bighornsurveying.com

DRAWN BY: KC
CHECKED BY: MB
APPROVED BY: MB
DATE: 10/18/2016
REVISIONS:
SCALE: 1"=500'
PROJECT NO.: 12-23
DRAWING: 1223 CR 1 Rock Creek Rd
LAYOUT: 24" X 36"
SHEET: 3/5

