

LEGEND:

- ⊕ FOUND STANDARD HIGHWAY RIGHT-OF-WAY MONUMENT
- ⊖ FOUND ALTERNATE HIGHWAY RIGHT-OF-WAY MONUMENT (3-1/4" ALUMINUM CAP PER PLS 5367)
- ⊠ FOUND 1-1/2", 2" OR 3-1/4" ALUMINUM CAP PER PLS 5367
- ⊡ FOUND 1-1/2", 2" OR 2-1/2" ALUMINUM CAP PER PE&LS 2085
- ▲ FOUND 1-1/2" BRASS CAP PER PE&LS 685
- ◇ FOUND 2" ALUMINUM CAP PER PE&LS 8663
- FOUND 2" OR 2-1/2" ALUMINUM CAP PER PE&LS 12309
- ◆ FOUND 2" ALUMINUM CAP PER PE&LS 12554
- FOUND 2" ALUMINUM CAP PER PE&LS 10245
- ◆ FOUND 2" ALUMINUM CAP PER PLS 10566
- ⊠ FOUND 2" ALUMINUM CAP PER PE&LS 13351
- ◇ FOUND 1-1/2" OR 2" ALUMINUM CAP PER PLS 324
- ◻ FOUND 1-1/2" OR 2" ALUMINUM CAP ILLEGIBLE
- ⊙ FOUND 1" OR 1-1/2" IRON PIPE
- ⊕ FOUND SCRIBED X
- FOUND PK NAIL
- ⊙ FOUND 3/8" OR 5/8" REBAR
- ◆ FOUND IRON PIN OR IRON STOCK
- CALCULATED: NOTHING FOUND/NOTHING SET
- ⬡ CALCULATED: HIGHWAY RIGHT-OF-WAY MONUMENT
- ▲ CONTROL POINT (3-1/4" ALUMINUM CAP PER WYDOT)

NOTE:

- NA = NOT ACCEPTED
- HMON = HIGHWAY RIGHT-OF-WAY MONUMENT
- RW = RIGHT-OF-WAY
- WC = WITNESS CORNER
- CL = CENTERLINE
- PCOR = PROPERTY CORNER
- LCOR = U. S. PLSS LAND CORNER
- EQ = EQUATION STATION
- PC = POINT OF CURVE
- PT = POINT OF TANGENT
- POT = POINT ON TANGENT
- CS = CURVE TO SPIRAL
- ST = SPIRAL TO TANGENT
- AC = ALUMINUM CAP
- BC = BRASS CAP
- CC = CLOSING CORNER

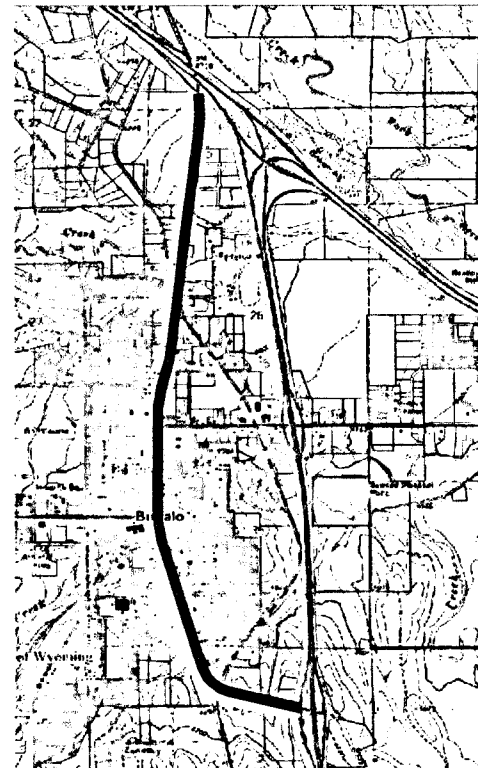
RECORDER'S CERTIFICATE

STATE OF WYOMING }
 COUNTY OF JOHNSON } SS Doc Number: 325164
 This instrument was Filed for record on 7/3/2023 at 11:44 AM
 and was duly recorded in book: H.FILE page: 657 - 677 fees: 75.00
 _____ Johnson County Clerk
 By Nancy McCay, asst, Deputy

RECORD OF SURVEY
 U.S. HIGHWAY No. 87 (BUFFALO MAIN STREET)
 "INTERSTATE-25 TO INTERSTATE-90"

LOCATION: T50N, R82W
 SECTION 2, SW1/4NE1/4, LOT 2, LOT 3 & LOT 4

LOCATION: T51N, R82W
 SECTION 23, NW1/4SW1/4, SW1/4SW1/4 & NE1/4SW1/4
 SECTION 26, NW1/4NW1/4, LOT 2, LOT 3 & LOT 4
 SECTION 35, LOT 1, LOT 2, LOT 3 & LOT 4



VICINITY MAP
 NO TRUE SCALE

SURVEYOR'S CERTIFICATE

STATE OF WYOMING : ss
 COUNTY OF SHERIDAN

I, THONE STEWART, A DULY REGISTERED LAND SURVEYOR IN THE STATE OF WYOMING, DO HEREBY STATE THAT THIS PLAT REPRESENTS THE RESULTS OF A SURVEY MADE BY ME OR UNDER MY DIRECT SUPERVISION.



STATE OF WYOMING	PROJ. No. P591008/PE21	SHEET No. R1	TOTAL SHEETS R21
"BUFFALO MAIN STREET I-25/I-90" JOHNSON COUNTY, WY			

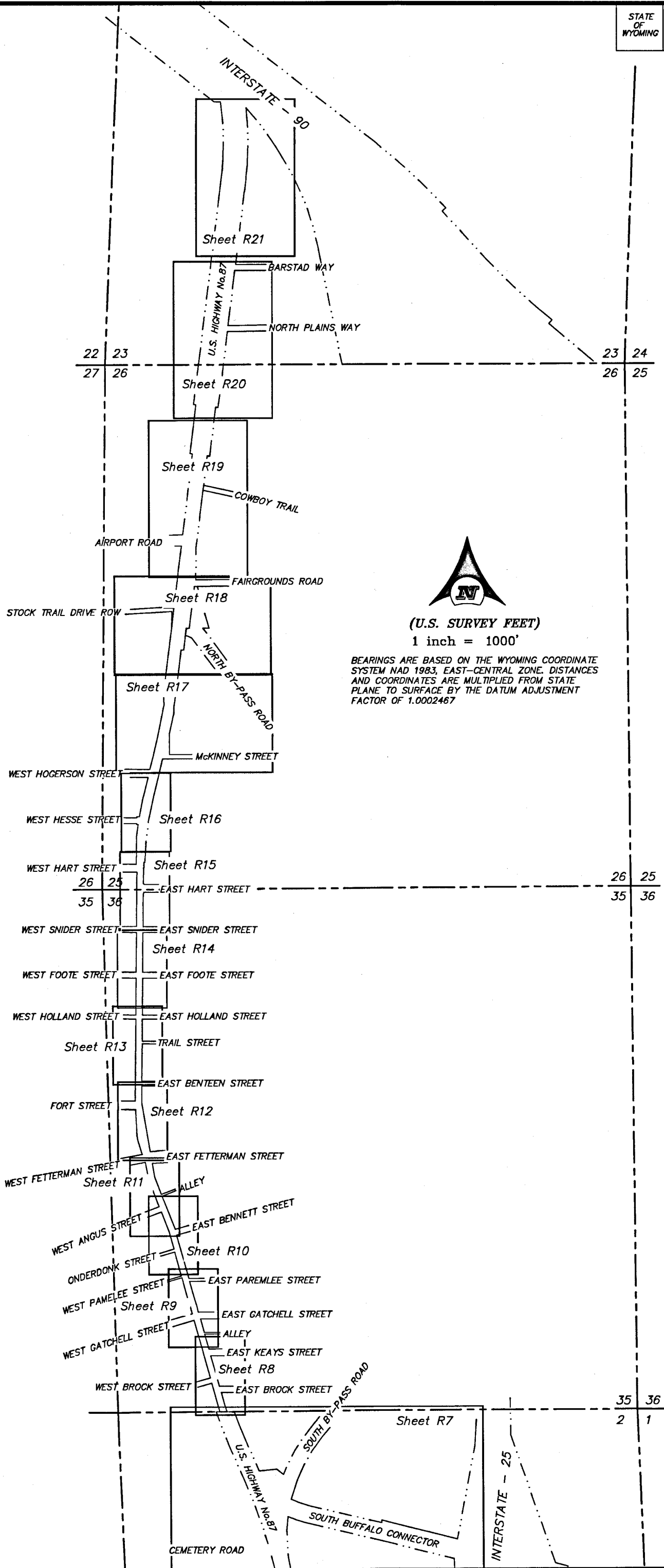
INDEX OF SHEETS

PAGE	TITLE SHEET
R1	TITLE SHEET
R2	SECTION & LOCATION MAP
R3	PROPERTY CORNER SUMMARY-PROJECT CONTROL
R4	CALCULATED PROPERTY CORNERS
R5	CALCULATED PROPERTY CORNERS-ROW MONUMENTS
R6	EASEMENT DEEDS, OWNERSHIP DEEDS, NOTES
R7-R21	BOUNDARY AND RIGHT-OF-WAY SHEETS

SUBDIVISION LIST
Barstad Subdivision
Bergner Addition Lot Split Lot 11 Resubdivision of Lot 2A Block 1
Bergner Addition Resubdivision Lot 2A Block 1
Buffalo High School Addition
Buffalo Lumber 2ND Addition
Buffalo Lumber Addition
Carwile's Addition Revised Plat
Crown Addition
Eyechaner Addition
Eyechaner Addition Block 16 Resubdivision of Lots 1-4
Eyechaner Addition Re-Subdivision Block 20
Fetterman Addition (Amended)
Gray Addition
Hatch Addition Resubdivision
Idlewild Condominiums Corrected Plat
Irvine Addition
Kansorka Addition
Kube Addition
Leitchman Minor Subdivision
Main Street Properties Condominium Units
North By-Pass Addition
North By-Pass Addition Lot Split of Lot 6
Northern Plains Subdivision
Original City of Buffalo
Original City of Buffalo Corrective Plat Resubdivision of Block 11
Rotellini Addition
South Main Subdivision
Wesleyan Church Addition



PO BOX 3082
 SHERIDAN, WY 82801
 307-672-7415
 FAX 674-5000
 JN: 2022-068
 PF: T2022-068
 DF: 2022-068D ROS
 APRIL 6, 2023



(U.S. SURVEY FEET)
1 inch = 1000'

BEARINGS ARE BASED ON THE WYOMING COORDINATE SYSTEM NAD 1983, EAST-CENTRAL ZONE. DISTANCES AND COORDINATES ARE MULTIPLIED FROM STATE PLANE TO SURFACE BY THE DATUM ADJUSTMENT FACTOR OF 1.0002467

ACCEPTED PROPERTY CORNER SUMMARY

POINT	NORTHING	ELEVATION	DESCRIPTION
704	1733683.4969	1478437.1361	LCOR1.5" BC PE&LS 685
709	1732788.5577	1478582.1172	PCORISCRIBED - X
710	1732568.1606	1478579.9779	PCOR1.5" AC PLS 5367
711	1732714.2325	1478440.5526	PCOR12" AC PLS 10566
712	1732651.6957	1478439.7524	PCOR12" AC PLS 10566
713	1732570.0266	1478438.6857	PCORISCRIBED - X
714	1732790.1478	1478441.3843	PCOR1.5" AC PLS 5367
718	1732369.2615	1478794.2026	PCOR11" IRON PIPE
722	1733941.2598	1478589.0383	PCOR12" AC PLS 5367
725	1732850.7774	1478427.0983	PCOR1.5" AC ILLEGIBLE
726	1732848.5396	1478582.3165	PCOR15/8" REBAR
730	1732490.8889	1478645.4070	PCOR1.5" AC PLS 5367
731	1732535.8449	1478645.8246	PCOR1.5" AC PLS 5367
733	1733048.6330	1478585.0390	PCOR1.5" AC ILLEGIBLE
734	1732998.5903	1478584.3961	PCOR15/8" REBAR
741	1731332.0518	1478818.4912	PCOR12.5" AC PE&LS 12309
742	1731263.4834	1478830.4645	PCOR1.5" AC ILLEGIBLE
743	1731233.1699	1478836.2880	PCOR13/8" REBAR-BENT
745	1731180.6227	1478845.1565	PCOR11/2" IRON STOCK
746	1731388.2625	1478808.8969	PCOR12" AC PLS 5367-BENT
747	1731455.9092	1478797.3458	PCOR12" AC PLS 5367
748	1731296.1989	1478824.4987	PCOR12.5" AC PE&LS 12309
749	1731968.3940	1478789.5134	PCOR11" IRON PIPE
750	1731856.6052	1478788.2070	PCOR15/8" REBAR-BENT
757	1733956.7059	1479037.2218	PCOR11" IRON PIPE
768	1733245.9332	1478803.6741	PCOR15/8" REBAR
773	1731430.1881	1478649.4991	PCORISCRIBED - X
775	1731206.4511	1478688.3367	PCORISCRIBED - X
777	1733100.5630	1478445.3125	PCOR1.5" AC ILLEGIBLE
778	1733049.4518	1478444.9034	PCOR15/8" REBAR-BENT
780	1733251.0630	1478431.6461	PCOR11/2" IRON PIN
781	1733386.0809	1478448.3444	PCOR12.5" AC PE&LS 10245
782	1733472.6878	1478449.6781	PCOR12" AC PE&LS 8663
784	1733942.5632	1478441.9812	PCORISCRIBED - X
789	1733384.4386	1478585.4592	PCOR12.5" AC PE&LS 10245-4WC
796	1732007.3073	1478432.9362	PCOR11" IRON PIPE-BENT
797	1731894.8636	1478431.6835	PCOR1.5" IRON PIPE-BENT
800	1732056.9280	1478574.4983	PCOR11" IRON PIPE
803	1735003.0354	1478461.4574	LCOR11" IRON PIPE
804	1730239.6949	1478967.5921	PCOR11" IRON PIN
805	1730182.0581	1478983.5462	PCOR15/8" REBAR-BENT
806	1728391.3187	1479413.7292	PCOR12" AC PE&LS 12309
816	1734670.0674	1478675.3415	PCOR1.5" AC PLS 5367
818	1735748.6975	1479008.2144	PCOR12" AC PLS 10566
819	1735922.1991	1479029.7861	PCOR1.5" AC PE&LS 2085
835	1738913.9492	1479477.0873	PCOR12" AC PE&LS 13351
836	1739395.4384	1479536.9217	PCOR12" AC PE&LS 13351
837	1739335.4319	1479529.1326	PCOR12" AC ILLEGIBLE-BENT
838	1739676.4433	1479571.8289	PCOR12" AC PE&LS 2085
839	1739957.7526	1479606.7958	PCOR12" AC PE&LS 2085-BENT
840	1740017.9493	1479614.2498	PCOR12" AC ILLEGIBLE

POINT	NORTHING	ELEVATION	DESCRIPTION
841	1739001.3639	1479236.0924	PCOR12" AC PE&LS 2085
844	1737665.0695	1479573.2886	PCOR12" AC PE&LS 12554
845	1737482.9317	1479242.6105	PCOR12" AC PE&LS 12554
846	1738509.7221	1479401.7311	PCOR12" AC PE&LS 13351
847	1738396.3883	1479186.0307	PCOR15/8" REBAR
848	1738156.2756	1479156.2148	PCOR15/8" REBAR
849	1736542.6665	1478879.4401	PCOR12" AC PE&LS 2085
850	1736003.1540	1479329.6213	PCOR1.5" AC PE&LS 2085-BENT
852	1736842.7851	1478950.9419	PCOR12" AC PE&LS 2085
853	1736123.9221	1478919.5584	PCOR12" AC PE&LS 2085
854	1735663.0681	1478873.9353	PCOR12" AC PE&LS 2085
855	1736184.0509	1478918.8745	PCOR12" AC PE&LS 2085
856	1736054.5479	1478920.1668	PCOR12" AC PE&LS 2085
858	1735746.2899	1478923.2223	PCOR1.5" AC PLS 5367
860	1735525.1300	1478869.7899	PCOR12" AC PE&LS 2085
862	1735041.8860	1478764.2153	PCOR1.5" AC ILLEGIBLE
865	1734903.1042	1478474.8402	PCOR11" IRON PIPE
866	1734671.8746	1478470.4794	PCOR1.5" AC PLS 5367
867	1734823.1661	1478473.2778	PCOR15/8" REBAR
868	1734411.8075	1478465.8825	PCOR1.5" AC PLS 5367
870	1735006.9741	1479050.1620	PCOR1.5" AC PE&LS 2085
874	1735480.1626	1478975.8870	PCOR12" AC PE&LS 2085
878	1735050.9055	1479128.3066	PCOR12" AC PE&LS 2085
884	1736330.3814	1479336.2282	PCOR12" AC PLS 5367
886	1736128.7069	1479423.2394	PCOR1.5" AC ILLEGIBLE
887	1736757.3353	1479476.9300	PCOR12" AC PLS 5367
888	1736765.0938	1479947.4655	PCOR12" AC PLS 5367
890	1737278.5635	1479192.7480	PCOR12" AC PE&LS 12544-BENT
891	1737276.5025	1479072.0946	PCOR15/8" REBAR
895	1727066.1486	1481114.5455	PCOR12" AC PE&LS 2085
898	1727419.5177	1481881.3322	PCOR12" AC PLS 324
899	1727171.5606	1481527.3260	PCOR1PK NAIL
902	1727195.2933	1481431.6165	PCOR1.5" AC BLANK
903	1727248.8883	1481214.6932	PCOR12" AC PLS 10566
909	1728393.9301	1479700.0192	LCOR1.5" IRON PIPE
910	1728407.3219	1479477.8480	PCOR1.5" AC PE&LS 2085
911	1728473.5840	1479459.2813	PCOR12" AC PLS 10566
912	1728585.9504	1479428.1179	PCORISCRIBED - X
915	1729768.4967	1479029.7505	PCOR15/8" REBAR
916	1729749.4157	1479035.5085	PCOR11" IRON PIPE
917	1729316.3239	1479156.5121	PCOR15/8" REBAR
918	1729218.6775	1479184.5057	PCOR11" IRON PIPE
919	1728889.0686	1479275.5207	PCOR15/8" REBAR
920	1728841.1466	1479288.8620	PCOR15/8" REBAR
921	1729033.3612	1479235.3902	PCOR1.5" AC ILLEGIBLE
922	1729230.0573	1478854.2583	PCOR15/8" REBAR-BENT
931	1729553.6336	1479313.2389	PCOR1.5" AC PLS 5367
932	1729459.7783	1479184.4893	PCOR15/8" REBAR
934	1729402.2505	1479371.5265	PCOR1.5" AC PE&LS 2085
937	1728586.8581	1479564.3852	PCOR12" AC PLS 10566
942	1728959.9325	1479665.2474	PCOR15/8" REBAR-BENT

POINT	NORTHING	ELEVATION	DESCRIPTION
944	1728391.7754	1479490.3778	PCOR1.5" AC PE&LS 2085
945	1729177.3888	1479263.0107	PCOR11" IRON PIPE
946	1728854.5859	1479353.0144	PCOR1.5" AC ILLEGIBLE
947	1728958.7325	1479323.8112	PCOR12" AC PLS 10566
949	1729332.5773	1479385.8267	PCOR11" IRON PIPE
950	1729192.8427	1479436.4606	PCOR11" IRON PIPE
960	1730225.9962	1479140.6407	PCOR12" AC PLS 5367
963	1730356.1933	1478502.7673	PCORISCRIBED - X
971	1728641.3325	1479188.5800	PCOR1.5" IRON PIPE
975	1729994.7216	1478794.8953	PCOR12" AC PLS 324
981	1730357.4809	1478674.3723	PCOR12" AC PLS 324

BEARINGS ARE BASED ON THE WYOMING COORDINATE SYSTEM NAD 1983, EAST-CENTRAL ZONE. DISTANCES AND COORDINATES ARE MULTIPLIED FROM STATE PLANE TO SURFACE BY THE DATUM ADJUSTMENT FACTOR OF 1.0002467

PROJECT CONTROL POINTS

3-1/4" ALUMINUM CAP SET IN CONCRETE

POINT	NORTHING	EASTING	DESCRIPTION
5	1726724.0086	1482677.7348	PCPTJOBM-5
6	1727075.3872	1481851.6140	PCPTJOBM-6
7	1727126.9484	1481008.6552	PCPTJOBM-7
8	1727428.7282	1479954.8377	PCPTJOBM-8
9	1728447.0548	1479406.4489	PCPTJOBM-9
10	1728947.6300	1479324.6047	PCPTJOBM-10
11	1729299.3237	1479166.1769	PCPTJOBM-11
12	1729755.8002	1479095.8250	PCPTJOBM-12
13	1730171.8862	1478982.9562	PCPTJOBM-13
14	1730416.8740	1478821.2073	PCPTJOBM-14
15	1730895.7247	1478740.2590	PCPTJOBM-15
16	1731578.1883	1478565.5509	PCPTJOBM-16
17	1732065.1250	1478636.6149	PCPTJOBM-17
18	1732865.3306	1478643.4440	PCPTJOBM-18
19	1733353.2288	1478591.0395	PCPTJOBM-19
21	1734116.8342	1478603.2767	PCPTJOBM-21
23	1735404.6657	1478936.3536	PCPTJOBM-23
24	1736122.8860	1478960.2440	PCPTJOBM-24
25	1736832.6528	1479147.0154	PCPTJOBM-25
26	1737716.4878	1479171.1748	PCPTJOBM-26
27	1738673.2000	1479404.7400	PCPTJOBM-27
28	1739517.8307	1479315.6491	PCPTJOBM-28
29	1740462.0545	1479618.2986	PCPTJOBM-29
30	1741423.3658	1479697.5667	PCPTJOBM-30
31	1742337.3164	1479429.0266	PCPTJOBM-31
32	1743200.7035	1478991.8790	PCPTJOBM-32
35	1732369.1150	1478581.6671	PCPTJOBM-5
36	1733776.8390	1478653.9902	PCPTJOBM-6
37	1734687.8092	1478695.4794	PCPTJOBM-7
40	1727564.0796	1482557.3247	PCPTJOBM-40
52	1738984.4030	1481005.5442	PCPTJOBM-52

CALCULATED PROPERTY CORNER SUMMARY

POINT	NORTHING	EASTING	DESCRIPTION
203	1740331.6827	1479653.2624	CALC
205	1739954.1736	1480078.6447	CALC
206	1740014.7526	1480109.8827	CALC
207	1739687.1208	1480064.2055	CALC
208	1739406.7099	1480049.1824	CALC
209	1739346.7244	1480050.5027	CALC
210	1739000.9157	1478932.5363	CALC
211	1738697.2318	1478979.2009	CALC
212	1738925.1412	1479993.4860	CALC
213	1738526.1848	1479569.9572	CALC
214	1738047.1033	1479318.9606	CALC
216	1737726.0535	1479279.0796	CALC
217	1737569.7565	1479378.2505	CALC
218	1737487.2875	1479249.4200	CALC
219	1737274.7647	1478970.5245	CALC
220	1737163.1619	1478993.1258	CALC
221	1737162.7361	1479209.1041	CALC
223	1738394.9612	1478737.6330	CALC
224	1736912.4989	1479026.8532	CALC
225	1736842.9738	1479018.2131	CALC
226	1736842.8726	1478982.7479	CALC
227	1736827.8474	1478982.6988	CALC
228	1738155.6174	1478779.3215	CALC
229	1733305.9205	1478804.7430	CALC
230	1736591.1291	1479169.2630	CALC
232	1736533.9904	1478979.8145	CALC
233	1736533.7340	1478961.4849	CALC
234	1736465.3691	1479153.6261	CALC
235	1736329.3548	1478917.4245	CALC
236	1736329.2980	1478954.3766	CALC
238	1736329.0371	1479116.0337	CALC
239	1728390.4396	1479258.2245	CALC
242	1736184.1943	1478936.3440	CALC
243	1728585.2610	1479359.8922	CALC
246	1735936.3773	1479220.9784	CALC
248	1735840.8695	1479019.6295	CALC
249	1735750.3702	1479067.4060	CALC
250	1735688.1180	1479234.7810	CALC
251	1735663.7197	1478473.0964	CALC
253	1735471.2112	1478858.6398	CALC
254	1735478.5202	1479075.2494	CALC
255	1735547.4773	1479263.1748	CALC
256	1735365.3623	1478951.3328	CALC
258	1735262.9887	1479132.9506	CALC
259	1735273.1282	1478817.6775	CALC
262	1728855.0574	1479487.6767	CALC
263	1735003.3754	1478692.1252	CALC
264	1734900.0500	1478730.1734	CALC
265	1734820.2695	1478711.3192	CALC
266	1734714.4539	1478788.8370	CALC
269	1734634.7423	1478769.7776	CALC
270	1734420.4690	1478621.1409	CALC
271	1734420.7496	1478596.5082	CALC

POINT	NORTHING	EASTING	DESCRIPTION
272	1734410.6038	1478596.3741	CALC
274	1734350.6151	1478594.8705	CALC
275	1734340.7126	1478594.6465	CALC
276	1734340.5428	1478608.2689	CALC
277	1734291.1210	1478601.4260	CALC
279	1733862.9061	1478455.6873	CALC
280	1733861.1738	1478595.0067	CALC
281	1733961.1384	1478667.4584	CALC
282	1729026.1284	1479436.8836	CALC
283	1733902.3502	1478661.6119	CALC
284	1733902.2750	1478666.6513	CALC
285	1728949.1938	1478932.1514	CALC
286	1733862.3652	1478661.1165	CALC
290	1733761.3069	1478593.8254	CALC
292	1733711.3104	1478593.2341	CALC
294	1733659.0994	1478592.6165	CALC
296	1733559.1059	1478591.4337	CALC
298	1733533.5246	1478657.0546	CALC
300	1733483.5277	1478656.4812	CALC
302	1733470.9983	1478590.3916	CALC
303	1733408.5323	1478655.6211	CALC
305	1733310.7895	1478447.1850	CALC
306	1733309.2029	1478588.4778	CALC
307	1733307.5814	1478654.4633	CALC
308	1733249.2059	1478587.8694	CALC
309	1733247.9900	1478653.8589	CALC
311	1733158.9132	1478586.6180	CALC
312	1733147.9996	1478652.4722	CALC
314	1733099.7367	1478585.7979	CALC
315	1733098.0044	1478651.7789	CALC
316	1732999.4101	1478443.3940	CALC
317	1732985.5152	1478650.2189	CALC
319	1732898.0236	1478649.0056	CALC
321	1732845.9544	1478798.9583	CALC
322	1732848.3146	1478648.3162	CALC
323	1732785.9604	1478798.1026	CALC
324	1732788.3103	1478648.1177	CALC
325	1732712.5552	1478581.3795	CALC
326	1732686.8099	1478647.1959	CALC
328	1732626.8123	1478646.6509	CALC
329	1732659.7280	1478580.8668	CALC
332	1732534.2442	1478795.8163	CALC
333	1732489.2883	1478795.3867	CALC
334	1732512.5644	1478579.4383	CALC
336	1732413.7831	1478436.7082	CALC
337	1732411.9120	1478578.4613	CALC
338	1732410.8889	1478644.4649	CALC
339	1732409.2919	1478794.6221	CALC
340	1732373.7755	1478437.0191	CALC
341	1732371.9145	1478578.0071	CALC
342	1732370.8893	1478644.2113	CALC
344	1732340.8528	1478643.8600	CALC
345	1732331.9115	1478577.5614	CALC

POINT	NORTHING	EASTING	DESCRIPTION
347	1732229.8603	1478642.5620	CALC
350	1732161.9217	1478575.6675	CALC
351	1732145.7978	1478641.5789	CALC
352	1732143.7740	1478791.5650	CALC
353	1732120.7488	1478641.2129	CALC
354	1732118.7196	1478791.2725	CALC
355	1732101.9253	1478574.9991	CALC
356	1732058.7891	1478433.5098	CALC
357	1732005.8078	1478573.9283	CALC
359	1731955.8109	1478573.3713	CALC
360	1731969.9950	1478639.5334	CALC
361	1731908.9988	1478638.8538	CALC
363	1731893.3641	1478572.6755	CALC
364	1731858.1997	1478638.2879	CALC
366	1731811.5896	1478571.7645	CALC
368	1731736.5942	1478570.9289	CALC
369	1731745.5921	1478637.0333	CALC
370	1731743.9983	1478786.8901	CALC
372	1731686.5973	1478570.3719	CALC
373	1731695.5969	1478636.3137	CALC
374	1731693.9950	1478786.9278	CALC
375	1731591.1940	1478635.0927	CALC
377	1731545.6071	1478634.5596	CALC
379	1731543.4168	1478427.7680	CALC
380	1731541.9676	1478568.7606	CALC
381	1731520.3025	1478634.2636	CALC
382	1731518.4436	1478634.2419	CALC
384	1731458.1450	1478429.6882	CALC
385	1731454.2278	1478571.7479	CALC
386	1731362.5828	1478661.3112	CALC
387	1731340.0957	1478665.2167	CALC
389	1731323.8390	1478668.0400	CALC
391	1731306.4006	1478671.0687	CALC
392	1731270.5848	1478677.2890	CALC
393	1731237.8214	1478682.9792	CALC
394	1731191.7025	1478586.4363	CALC
395	1731149.0525	1478591.9112	CALC
396	1731182.0044	1478692.6733	CALC
398	1731154.9100	1478697.3790	CALC
399	1731126.7888	1478702.2629	CALC
401	1731086.8861	1478709.1931	CALC
403	1731052.8949	1478715.0965	CALC
405	1731027.9534	1478719.4283	CALC
406	1731034.8825	1478761.3596	CALC
407	1729297.4290	1478835.2636	CALC
408	1731015.6587	1478631.1374	CALC
409	1731001.0560	1478637.6020	CALC
411	1730894.2531	1478522.0785	CALC
412	1730921.3979	1478669.6097	CALC
413	1730910.4216	1478738.5021	CALC
414	1730917.4440	1478891.5561	CALC
415	1730755.9553	1478698.3285	CALC
416	1730773.5599	1478762.2596	CALC

POINT	NORTHING	EASTING	DESCRIPTION
417	1730597.4121	1478830.1012	CALC
418	1730651.0884	1478970.2647	CALC
419	1730578.7488	1478837.2904	CALC
420	1730632.5942	1478977.8954	CALC
421	1730541.4504	1478851.7422	CALC
422	1730504.0959	1478866.0473	CALC
423	1730472.1873	1478806.9386	CALC
425	1730416.3873	1478829.0079	CALC
426	1730280.2651	1479112.6509	CALC
427	1730412.6061	1478901.1703	CALC
431	1730330.5008	1478861.9860	CALC
432	1730370.5955	1478917.2983	CALC
435	1730297.8265	1478874.5320	CALC
437	1730269.8200	1478885.2857	CALC
438	1730218.4755	1478905.0007	CALC
440	1730205.5104	1478908.5950	CALC
441	1730039.7607	1478954.5466	CALC
442	1729969.9117	1478817.4462	CALC
443	1730010.8508	1478962.5615	CALC
444	1730013.4662	1479029.9994	CALC
447	1729962.3958	1478975.9949	CALC
448	1729965.2871	1479043.3783	CALC
451	1729889.6894	1478996.1516	CALC
452	1729917.1097	1479056.7568	CALC
455	1729880.1930	1479067.0083	CALC
457	1729841.2185	1479009.5895	CALC
458	1729833.2713	1479080.0380	CALC
460	1729706.7459	1478883.5619	CALC
461	1729730.2233	1478884.6597	CALC
463	1729674.5155	1479056.0673	CALC
464	1729743.1785	1479105.0561	CALC
465	1729744.0226	1479259.5544	CALC
466	1729712.9239	1479113.4575	CALC
467	1729713.7052	1479267.9242	CALC
470	1729588.9462	1479080.0627	CALC
471	1729604.7007	1479143.8245	CALC
473	1729540.6396	1479093.6088	CALC
474	1729513.1685	1479169.5078	CALC
475	1729501.1487	1479328.0962	CALC
476	1729401.9696	1479200.5632	CALC
478	1729383.7224	1479137.6115	CALC
479	1729332.3037	1479220.6582	CALC
480	1737276.4635	1479069.9765	CALC

BEARINGS ARE BASED ON THE WYOMING COORDINATE SYSTEM NAD 1983, EAST-CENTRAL ZONE. DISTANCES AND COORDINATES ARE MULTIPLIED FROM STATE PLANE TO SURFACE BY THE DATUM ADJUSTMENT FACTOR OF 1.0002467

CALCULATED PROPERTY CORNER SUMMARY

POINT	NORTHING	EASTING	DESCRIPTION
481	1729178.5156	1479039.4620	CALC
483	1729131.8436	1479207.9325	CALC
484	1729192.6709	1479259.4848	CALC
485	1727840.1776	1479597.3595	CALC
486	1729177.5555	1479436.4994	CALC
487	1729025.6656	1479305.1992	CALC
488	1728734.5932	1479318.4394	CALC
489	1728681.5971	1479333.1504	CALC
490	1728649.8305	1479410.2581	CALC
491	1728651.3256	1479652.6103	CALC
492	1728849.4607	1479133.3202	CALC
493	1728801.5458	1479146.6875	CALC
494	1728695.0332	1479176.4026	CALC
495	1728024.2558	1479707.9591	CALC
496	1728701.2428	1479395.8846	CALC

HIGHWAY RIGHT-OF-WAY MONUMENT SUMMARY

STATE OF WYOMING
 PROJ. No. P591008/PE21
 SHEET No. R5
 TOTAL SHEETS R21

POINT	NORTHING	EASTING	DESCRIPTION
RW500	1735837.1217	1478892.9867	HMONI1599+81.5
RW501	1735821.6006	1479017.2493	HMONI89+09.8
RW502	1728214.9163	1480325.5159	HMONI98+27.2
RW503	1733747.5693	1478659.6941	HMONIJOG-700
RW504	1733738.3742	1478669.4766	HMONIJOG-701
RW505	1733658.4485	1478666.8852	HMONIJOG-702
RW506	1733641.9110	1478658.2976	HMONIJOG-703
RW507	1733944.8486	1478589.1098	HMONIBLANK (61+92.5)
RW508	1734219.2045	1478593.0016	HMONIBLANK (64+62.5)
RW511	1733735.5836	1478974.4690	HMONIJOG-708
RW512	1733655.7342	1478973.6098	HMONIJOG-706
RW513	1728391.1283	1479374.8624	HMONI2478+82.5
RW514	1727099.0012	1481819.6982	HMONI2462+75
RW515	1726901.5496	1481785.5996	HMONI2460+87.06
RW516	1727795.5634	1479808.9447	HMONI2471+85
RW517	1727809.5630	1479991.0290	HMONIBLANK (103+15)
RW518	1734593.3289	1478656.9664	PCORIS/8" REBAR BENT
RW519	1736255.9967	1479096.1116	PCOR12" AC PE&LS 8663
RW520	1738077.4016	1479322.7237	HMONI1577+00
RW521	1738074.5957	1479347.4225	HMONI1577+00
RW522	1738095.9957	1479173.7977	HMONI1577+00
RW523	1738099.1119	1479149.0645	HMONI1577+00
RW524	1738569.3224	1479409.1267	HMONI1572+00
RW525	1738566.3242	1479433.8726	HMONI1572+00
RW526	1738593.9760	1479210.5362	HMONI1572+00
RW527	1738597.0860	1479185.9812	HMONI1572+00
RW528	1740738.4154	1479703.8085	HMONI1550+08.9
RW529	1740769.1902	1479455.9361	HMONI1550+08.9
RW530	1741652.0717	1479462.4043	HMONIBLANK (1541+26.5)
RW531	1741660.4169	1479460.8892	PCOR12" AC PE&LS 2085
RW532	1741660.2204	1479396.0504	HMONI1790+95
RW533	1737163.0340	1479057.9878	HMONI1586.44AH/BK
RW534	1736209.8742	1479176.2093	PCOR12" AC PE&LS 8663
RW535	1735683.1460	1478873.6356	PCOR12" AC PE&LS 2085
RW536	1735551.2684	1478874.9444	PCOR12" AC PE&LS 2085
RW537	1735211.7445	1478804.9837	HMONIBROKEN (74+71.5)
RW538	1735531.1234	1478975.2793	PCOR11.5" AC S367-BENT
RW539	1735474.4181	1478975.9677	PCOR12" AC PE&LS 2085
RW540	1734570.1386	1478754.3299	HMONI68+35.8
RW541	1735261.9554	1478927.9726	PCOR11.5" AC ILLEGIBLE

POINT	NORTHING	EASTING	DESCRIPTION
RW542	1736149.8448	1478932.0749	HMONI1596+66.2
RW543	1736134.3684	1479056.2172	HMONI1596+66.2
RW544	1737145.2082	1479209.8036	HMONILEAN/OVER (NOT ACCEPTED)
RW545	1727441.5751	1480314.3071	HMONI13+46
RW546	1727271.7857	1480272.8929	HMONIBROKEN (13+46)
RW547	1726363.9150	1481798.5790	HMONI2455+73.23
RW548	1728036.1435	1481999.9790	HMONI2472+00
RW549	1727289.5050	1481051.2752	HMONI5+58
RW550	1727263.8806	1481051.1352	HMONI5+58
RW551	1728120.6796	1480441.5892	HMONI98+27.2
RW552	1727723.1519	1479649.5603	HMONILEAN/OVER (NOT ACCEPTED)
RW553	1741199.7013	1480028.0799	HMONI1799+48.4
RW554	1741112.2234	1480083.1436	HMONI1800+46.7
RW555	1740197.3761	1480450.7628	HMONI1810+83.0
RW556	1728392.3479	1479559.6811	HMONI2478+82.5
RW557	1728031.5953	1479513.4213	PCOR11.5" AC PLS 5367
RW558	1735686.5642	1479000.6477	PCOR12" AC PLS 10566
RW559	1727700.9509	1480194.1393	PCOR12" AC PE&LS 8663
RW560	1727756.0375	1480054.6259	PCOR12" AC PE&LS 8663
RW561	1728102.9371	1479673.3068	HMONIBROKEN (2475+81.2)
RW562	1737144.5320	1479206.8427	CALC
RW563	1736818.8019	1479202.6985	CALC
RW564	1736752.6741	1479189.3495	CALC
RW565	1736329.0665	1479105.0936	CALC
RW566	1736328.9816	1479136.6677	CALC
RW567	1736329.8853	1479273.7294	CALC
RW568	1736111.3658	1479078.3330	CALC
RW569	1736111.1729	1479053.0219	CALC
RW570	1735050.6093	1478930.3768	CALC
RW571	1735006.2502	1478858.6068	CALC
RW572	1733961.0183	1478677.4602	CALC
RW573	1733944.1403	1478677.2470	CALC
RW574	1727724.0088	1479648.6694	CALC
RW575	1727508.2898	1480132.4709	CALC
RW576	1727330.6194	1480098.6423	CALC
RW577	1726771.5624	1480127.3728	CALC
RW578	1741598.3687	1479721.9508	CALC
RW579	1741041.4821	1479485.2234	CALC
RW580	1741022.8500	1479734.4109	CALC
RW581	1733738.3204	1478674.7034	CALC

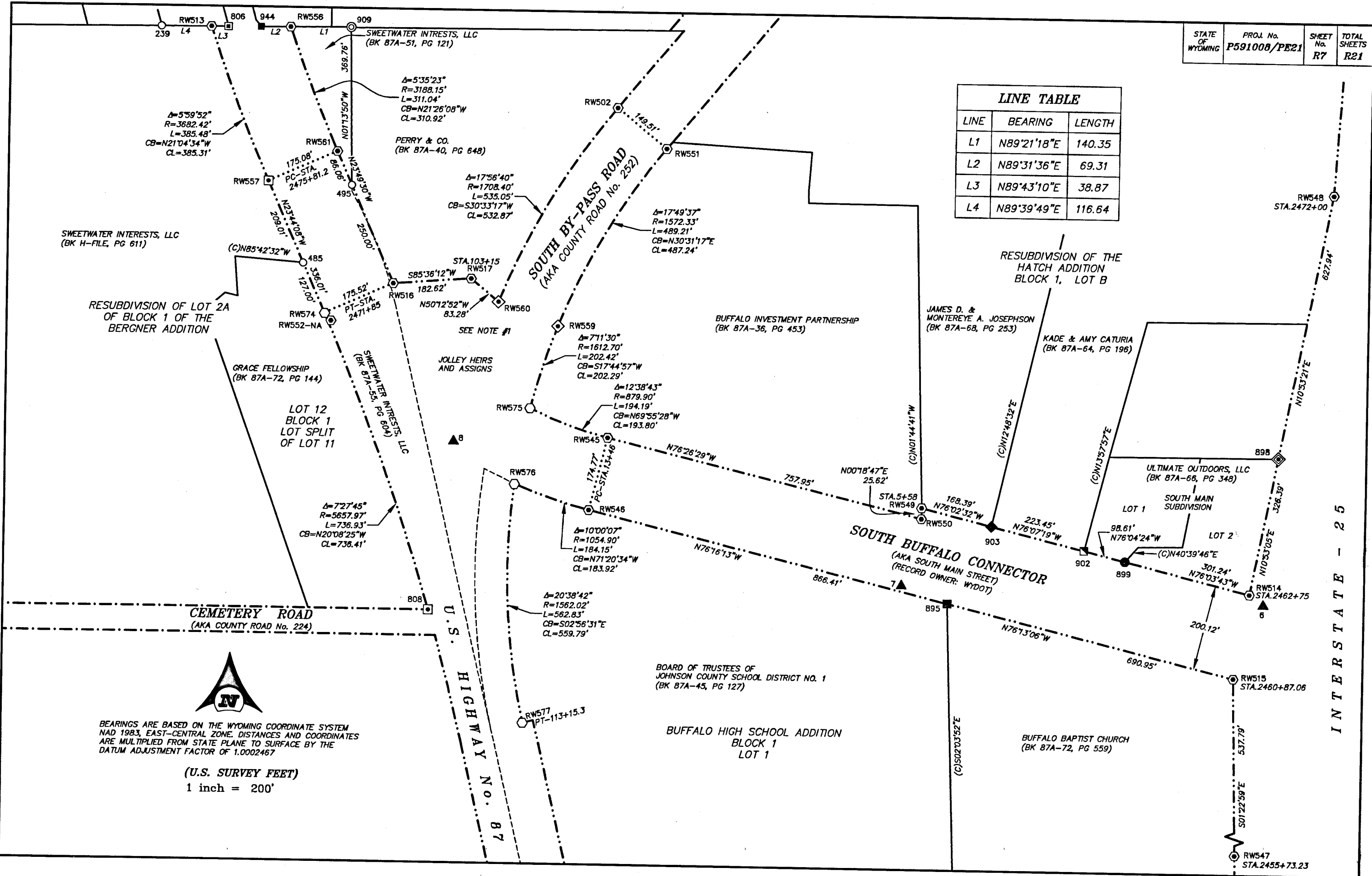
RIGHT-OF-WAY DOCUMENTS SUMMARY

GRANTOR	GRANTEE	DATE OF INSTRUMENT	BOOK	PAGE	REMARKS
GEORGE GOBLE	STATE OF WYOMING	10/1/1954	1	206	RIGHT-OF-WAY EASEMENT, NE1/4SW1/4, SEC.23, T51N, R82W, 6TH P.M.
RALPH R. ROBINSON et ux	STATE OF WYOMING	9/29/1954	1	189	RIGHT-OF-WAY EASEMENT, LOT 1 & LOT 2, SEC.26, T51N, R82W, 6TH P.M.
LEE DUNCAN et ux	STATE OF WYOMING	9/30/1954	1	201	RIGHT-OF-WAY EASEMENT, LOT 2, SEC.26, T51N, R82W, 6TH P.M.
GOMER B. & HOMER D. BALDWIN	STATE OF WYOMING	4/20/1954	87	57	QUITCLAM DEED, LOT 2, SEC. 26, T51N, R82W, 6TH P.M.
MARSHALL M. KEARNEY	STATE OF WYOMING	4/24/1954	1	185	RIGHT-OF-WAY EASEMENT, LOTS 4, 5 & 6 OF BLOCK 2, CHAPLINES ADDITION
FRANK DECASTRO	STATE OF WYOMING	4/23/1954	1	183	RIGHT-OF-WAY EASEMENT, BLOCKS 2, 4 & 5, CHAPLINES ADDITION
ROSS KEEFE	STATE OF WYOMING	5/24/1954	1	179	RIGHT-OF-EASEMENT, LOT 1 & 2, BLOCK1, CHAPLINES ADDITION
CROWN OIL COMPANY	STATE OF WYOMING	5/5/1954	1	181	RIGHT-OF-WAY EASEMENT, LOT 4, SEC. 26, T51N, R82W, 6TH P.M.
BOARD OF COUNTY COMMISSIONERS OF JOHNSON COUNTY, WY	THE PUBLIC	2/2/1954			RIGHT-OF-WAY RESOLUTION FOR PROJ. NO. I-222(5)
THE STATE HIGHWAY COMMISSION OF WYOMING	JOHNSON COUNTY, WY	1/11/1971	86A-12	283-288	PORTIONS OF PROJ. I-222 (5), NORTH & SOUTH BY-PASS ROAD, JOHNSON COUNTY ROAD NO. 252
FRED GATES	STATE OF WYOMING	5/4/1954	1	167	LOT 3 & LOT 4, SEC. 2, T50N, R82W, 6TH P.M.
GOLDEN V. JOLLEY et ux	STATE OF WYOMING	9/23/1954	1	170	NE1/4SW1/4 & E1/2NW1/4, SEC. 2, T50N, R82W, 6TH P.M.
GOLDEN V. JOLLEY et ux	THE STATE HIGHWAY COMMISSION OF WYOMING	12/2/1970	87A-11	172-173	WARRANTY DEED, LOT 3, SEC.2, T50N, R82W, 6TH P.M.
MARY M. NORVAL	THE STATE HIGHWAY COMMISSION OF WYOMING	4/20/1971	87A-11	295-296	WARRANTY DEED, LOT 2 & SW1/4NE1/4, SEC.2, T50N, R82W, 6TH P.M.
BOARD OF COMMISSIONERS MEETING MAY 3, 2011		2/23/2012	H.FILE	364	VACATION & RIGHT-OF-WAY COUNTY ROAD NO. 252, SEE CERTIFICATE OF SURVEY, PER PE&LS 8663

NOTES

- NOTE 1** IN 1971 THE STATE TRANSFERRED THE 87 BYPASS HIGHWAY TO THE COUNTY. THE RIGHT OF WAY SHOWN ALONG THE WEST LINE OF THE LOT 2, BLOCK 1 OF THE WEST PASS SUBDIVISION IS THE REMAINDER OF STATE RIGHT OF WAY FROM THE TRANSFER TO THE COUNTY. SUBSEQUENTLY THE COUNTY ON A COMMISSIONERS MEETING MAY 3, 2011 VACATED ALL OF THE BYPASS HIGHWAY OUTSIDE OF THE CENTER 150 FEET WITH SOME EXCEPTIONS. A CERTIFICATE OF SURVEY DETAILING THE VACATION WAS FILED PER PE & LS 8863. THE SOUTH INTERSECTION SHOWN HEREON IS SHOWN CONNECTING THE CERTIFICATE SURVEY FROM PE&LS 8863 WITH THE MONUMENT ALONG THE SOUTHEASTERLY LINE OF THE PERRY PROPERTY AS BEING THE BEST SOLUTION TO CONNECT THE TWO RIGHT OF WAY LINES. THE NORTH AND SOUTH INTERSECTIONS OF MAIN STREET AND THE 87 BYPASS HIGHWAY REFLECT THE RESULTS OF THE VACATION AND RECORD OF SURVEY PLAT.
- NOTE 2** THE NORTH RIGHT OF WAY LINE OF FORT STREET WAS CREATED BY A VACATION DOCUMENT AND THE SOUTH LINE WAS CREATED BY A GRANT FROM THE COUNTY, THE RESULTING WIDTH IS SHOWN HEREON.
- NOTE 3** THE WEST RIGHT OF WAY LINE FOR MAIN STREET IS SHOWN ON A DRAWING PER COUNTY SURVEYOR DATED OCT 1946 WHICH ALSO DELINATED THE DOCUMENT CREATING THE RIGHT OF WAY LINE FILED FEB 5TH, 1902.
- NOTE 4** THE NORTHEAST CORNER OF BLOCK 1 IS SHOWN ON TWO DRAWINGS FILED AT THE JOHNSON COUNTY COURTHOUSE AS BEING APPROXIMATELY 10 FEET WEST OF THE ORIGINAL BLOCK CORNER. HOWEVER, NO CORRESPONDING DOCUMENT TO CREATE THIS TAKING HAS BEEN FOUND AND A CONDOMINIUM PLAT FILED PER PE&LS 12309 SHOWS THE NORTHEAST CORNER IN THE LOCATION SHOWN ON THIS RECORD OF SURVEY.

LINE TABLE		
LINE	BEARING	LENGTH
L1	N89°21'18"E	140.35
L2	N89°31'36"E	69.31
L3	N89°43'10"E	38.87
L4	N89°39'49"E	116.64

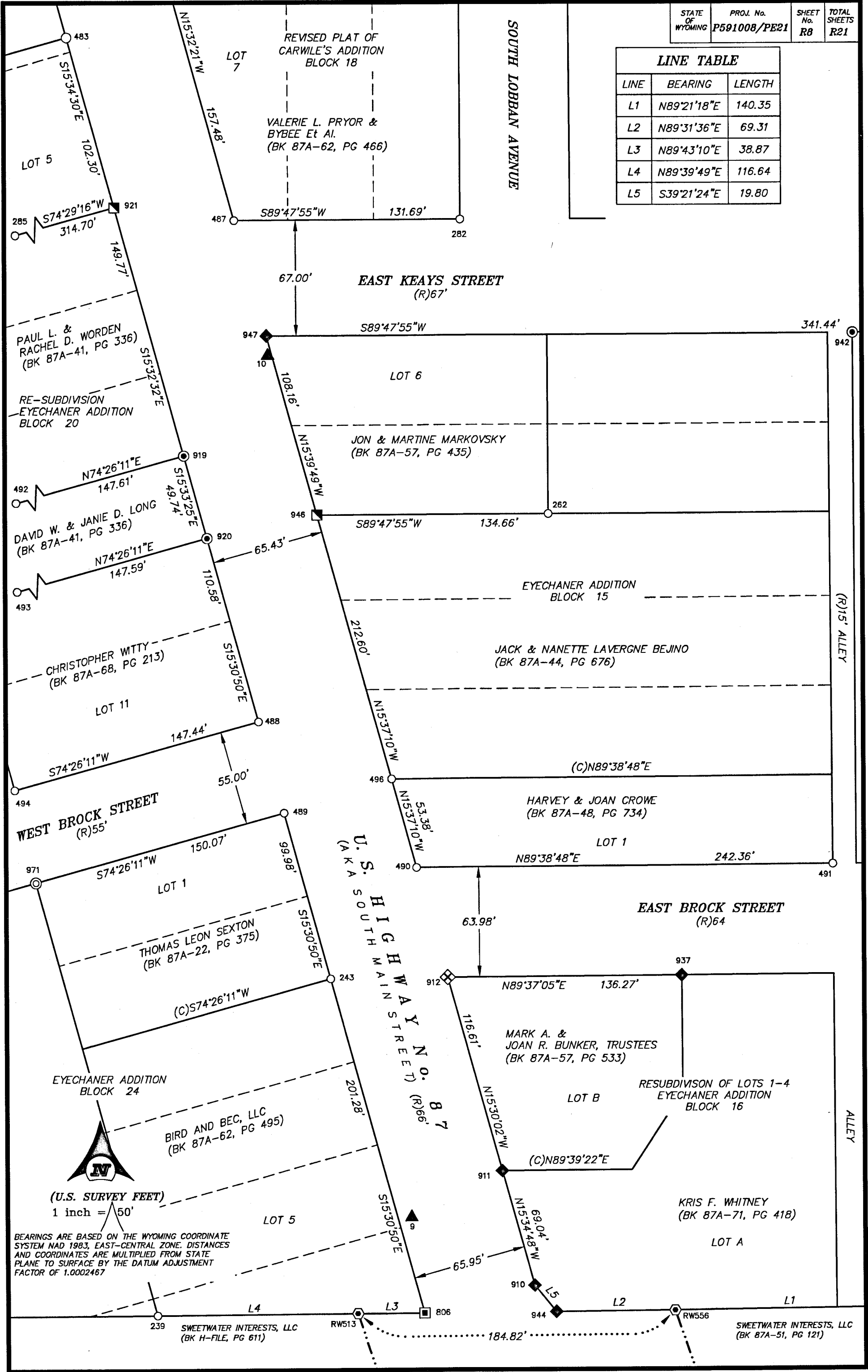


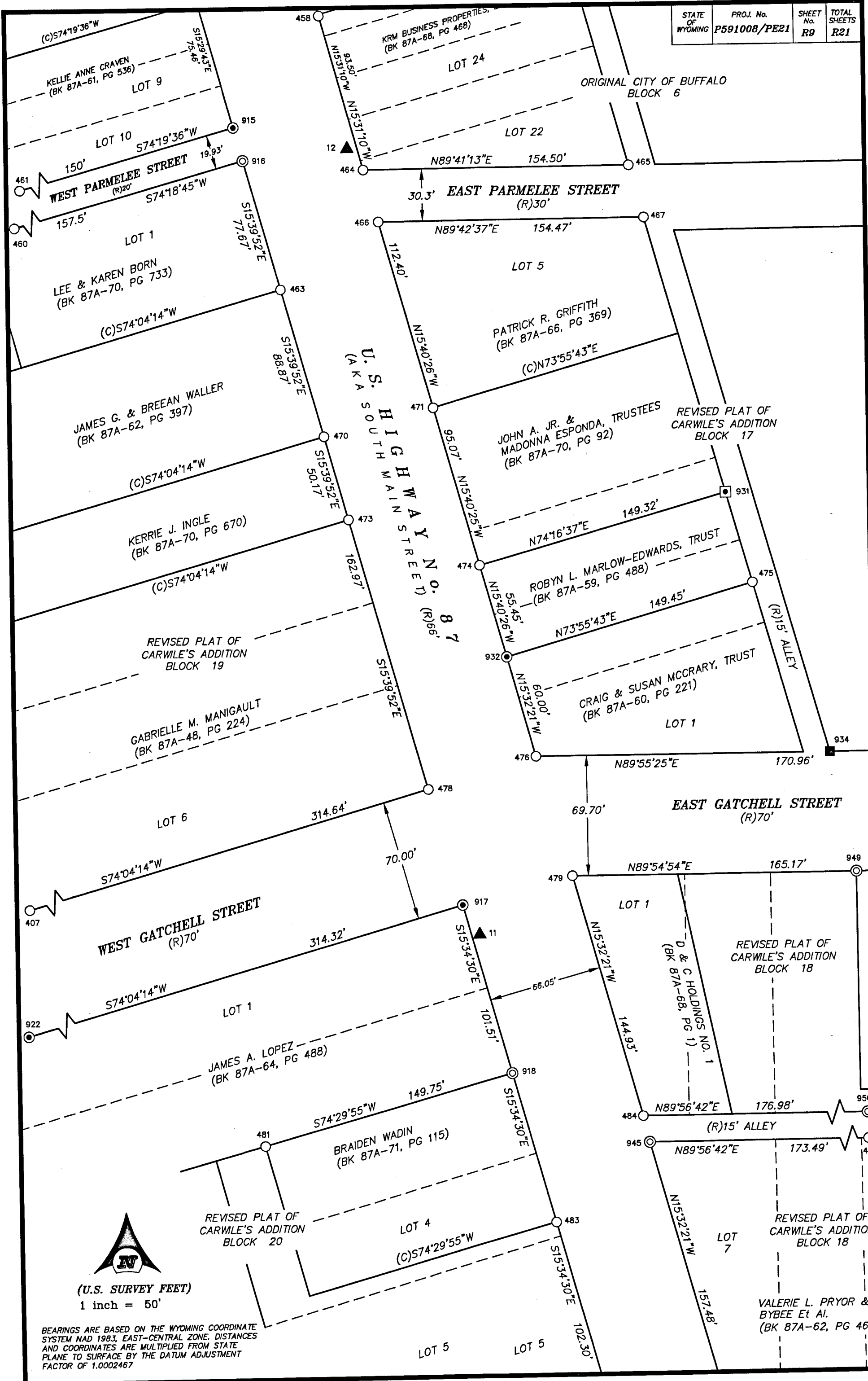
BEARINGS ARE BASED ON THE WYOMING COORDINATE SYSTEM NAD 1983, EAST-CENTRAL ZONE. DISTANCES AND COORDINATES ARE MULTIPLIED FROM STATE PLANE TO SURFACE BY THE DATUM ADJUSTMENT FACTOR OF 1.0002467

(U.S. SURVEY FEET)
1 inch = 200'

INTERSTATE - 25

LINE TABLE		
LINE	BEARING	LENGTH
L1	N89°21'18"E	140.35
L2	N89°31'36"E	69.31
L3	N89°43'10"E	38.87
L4	N89°39'49"E	116.64
L5	S39°21'24"E	19.80



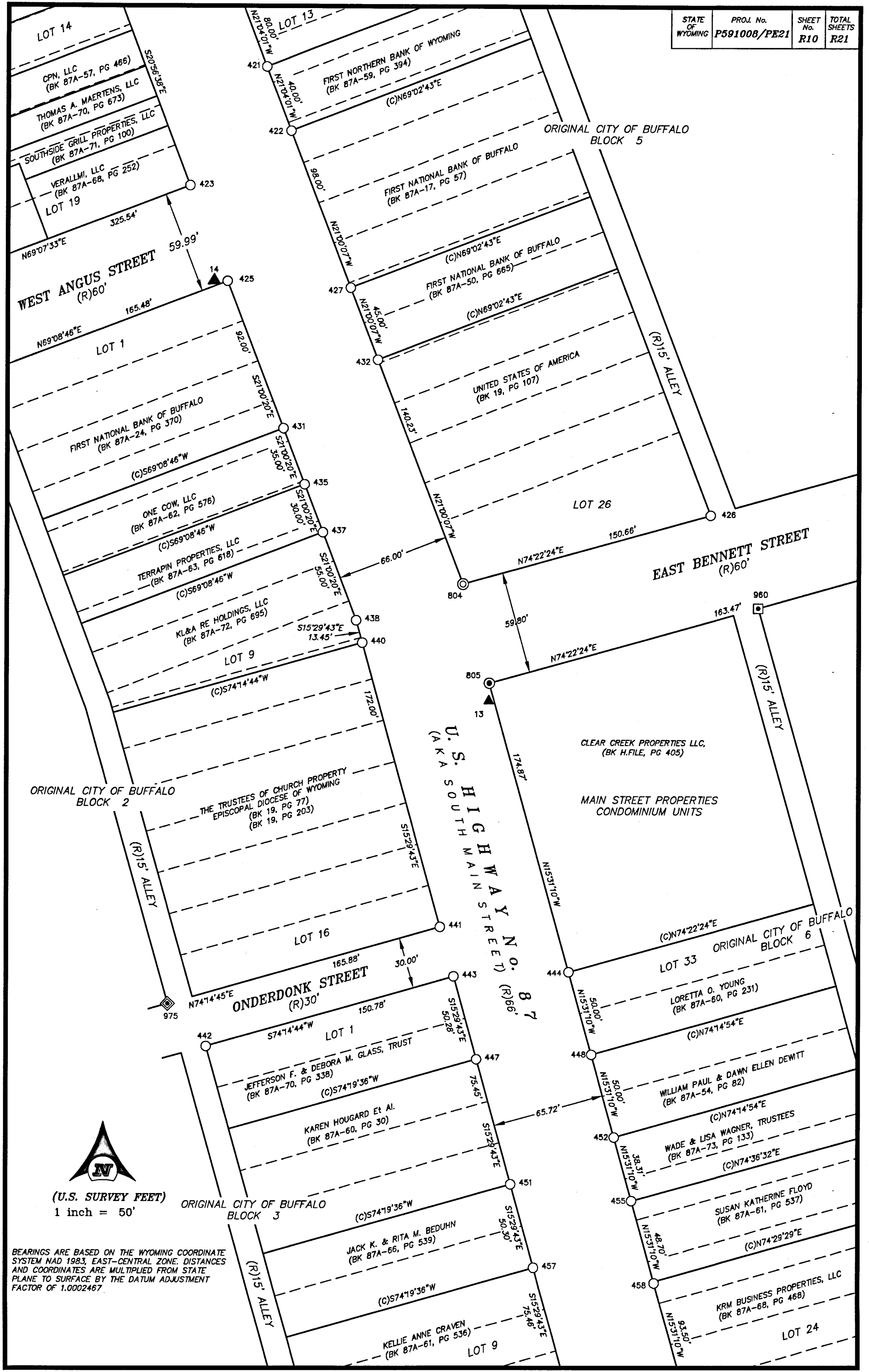


(U.S. SURVEY FEET)
1 inch = 50'

BEARINGS ARE BASED ON THE WYOMING COORDINATE SYSTEM NAD 1983, EAST-CENTRAL ZONE. DISTANCES AND COORDINATES ARE MULTIPLIED FROM STATE PLANE TO SURFACE BY THE DATUM ADJUSTMENT FACTOR OF 1.0002467

VALERIE L. PRYOR & BYBEE Et Al.
(BK 87A-62, PG 466)

STATE OF WYOMING	PROJ. No. P591008/PE21	SHEET No. R10	TOTAL SHEETS R21
------------------	------------------------	---------------	------------------



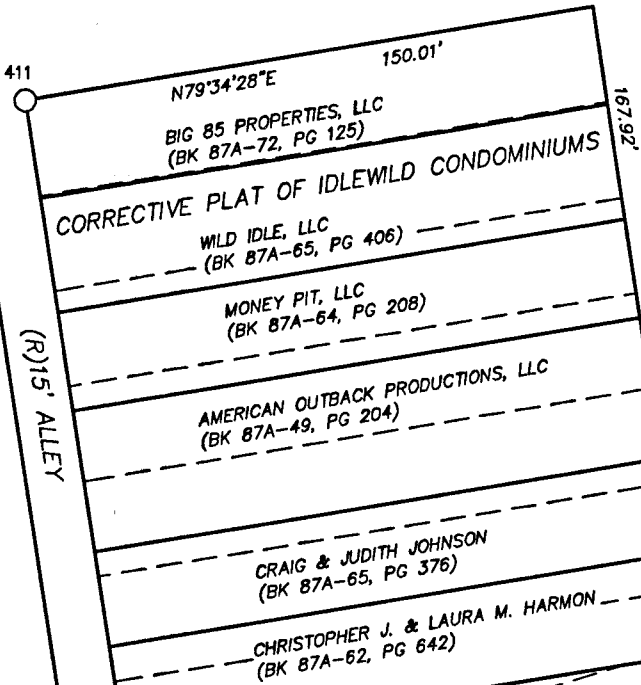
(U.S. SURVEY FEET)
1 inch = 50'

BEARINGS ARE BASED ON THE WYOMING COORDINATE SYSTEM NAD 1983, EAST-CENTRAL ZONE. DISTANCES AND COORDINATES ARE MULTIPLIED FROM STATE PLANE TO SURFACE BY THE DATUM ADJUSTMENT FACTOR OF 1.0002467.

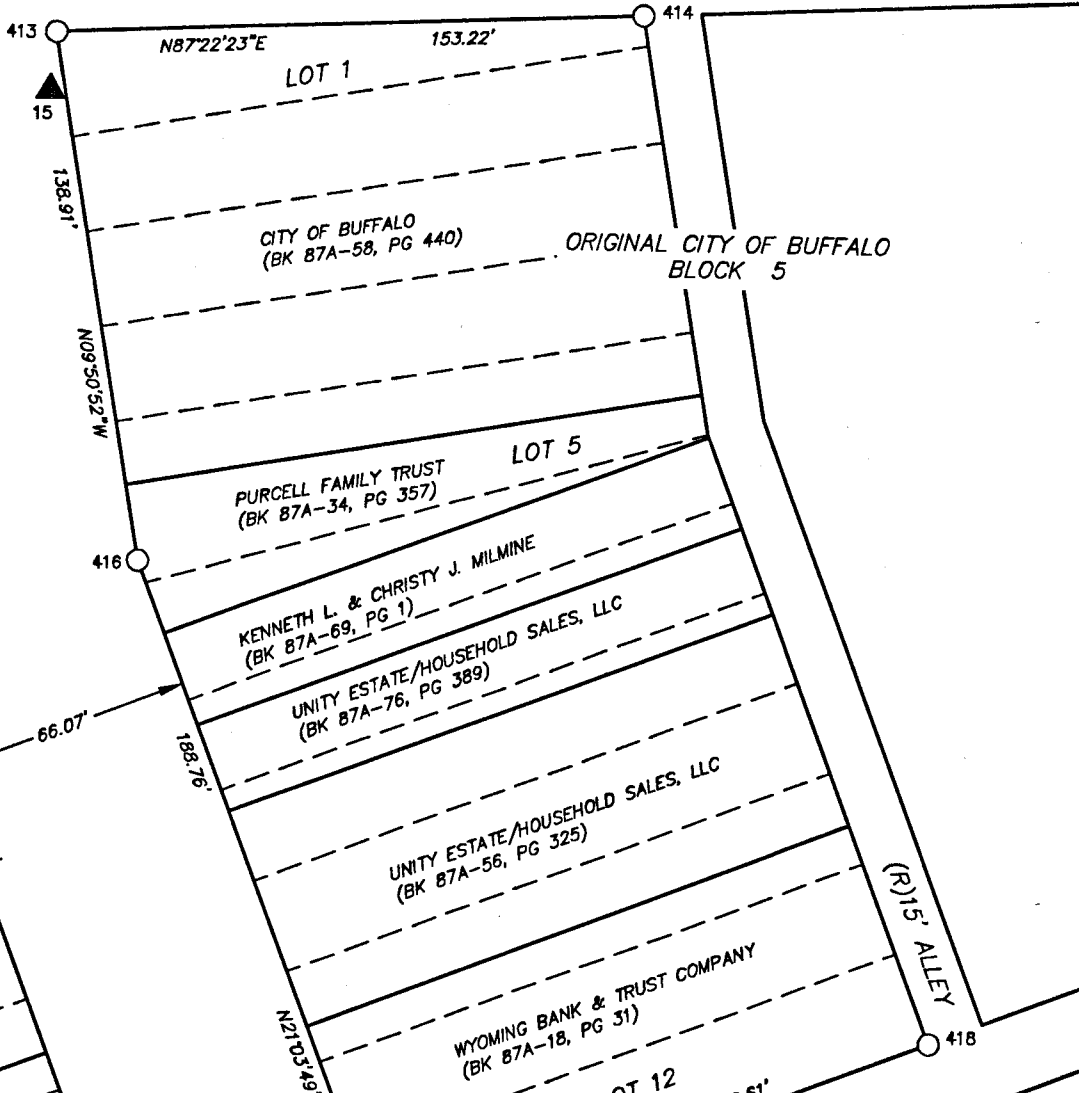
CLEAR CREEK

STATE OF WYOMING	PROJ. No. P591008/PE21	SHEET No. R11	TOTAL SHEETS R21
------------------	------------------------	---------------	------------------

412



(R)15' ALLEY



(R)15' ALLEY

ORIGINAL CITY OF BUFFALO BLOCK 1

(R)15' ALLEY

WEST ANGUS STREET (R)60'

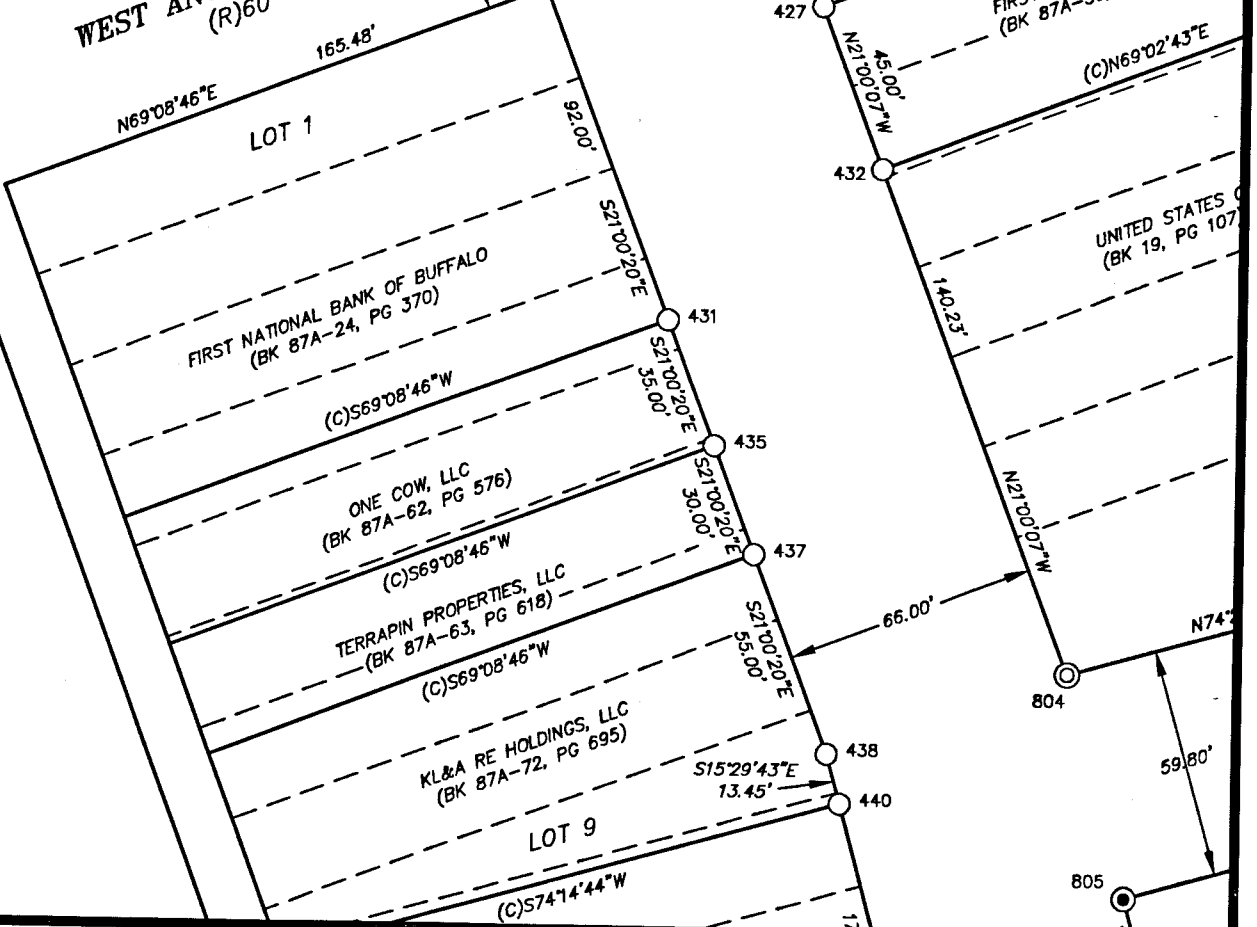
963

981



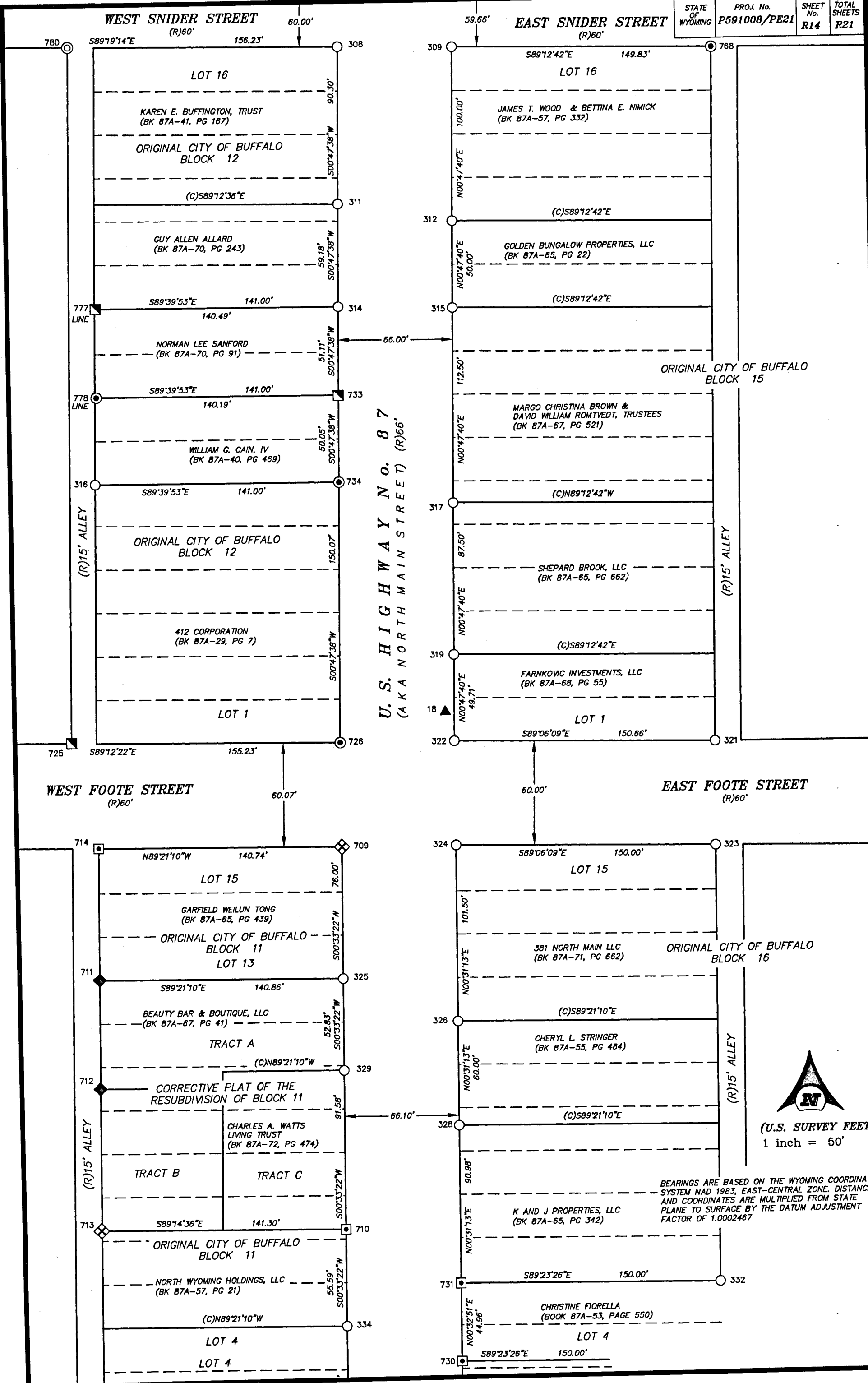
(U.S. SURVEY FEET)
1 inch = 50'

BEARINGS ARE BASED ON THE WYOMING COORDINATE SYSTEM NAD 1983, EAST-CENTRAL ZONE. DISTANCES AND COORDINATES ARE MULTIPLIED FROM STATE PLANE TO SURFACE BY THE DATUM ADJUSTMENT FACTOR OF 1.0002467




804

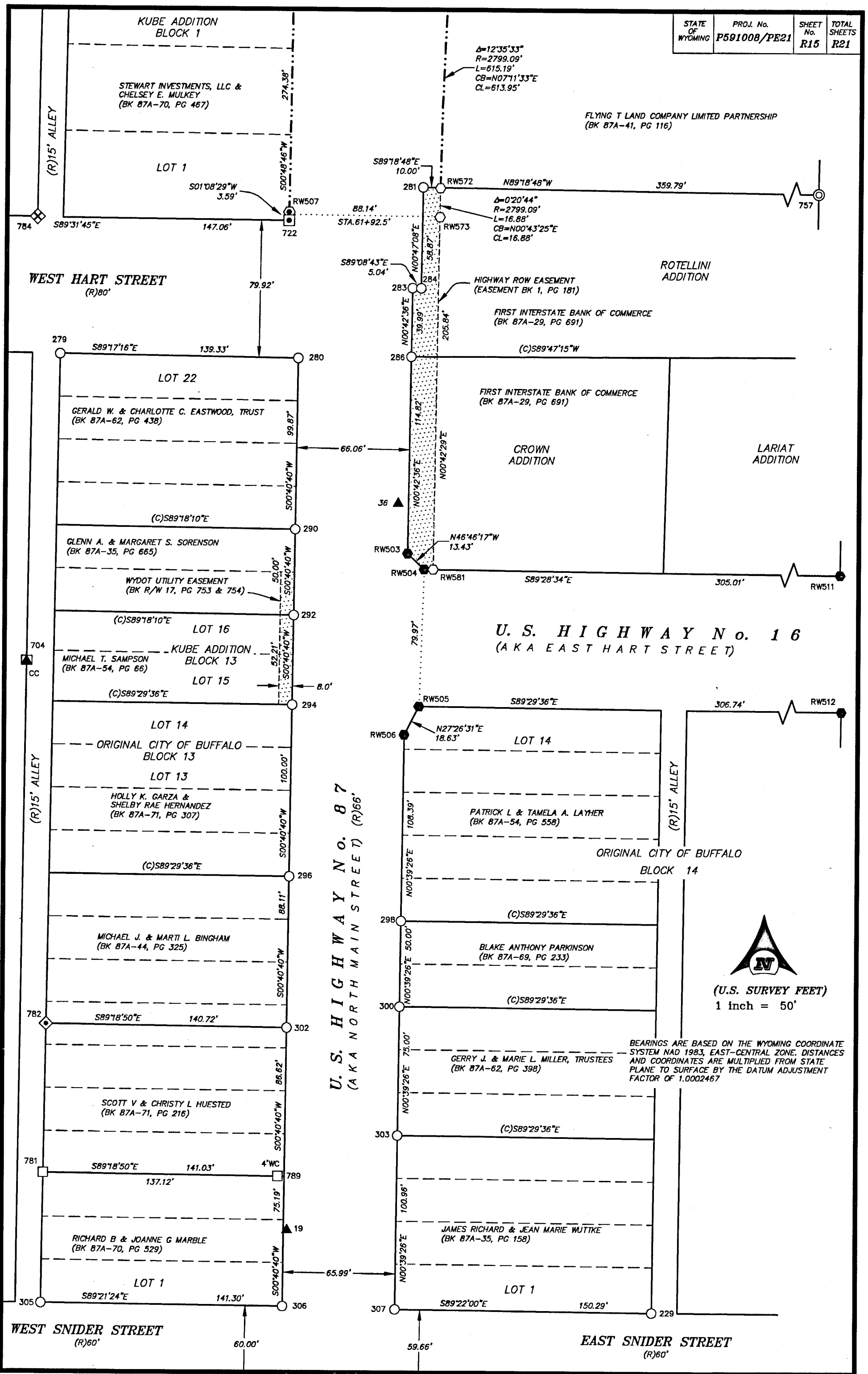
805



U.S. HIGHWAY No. 87
 (AKA NORTH MAIN STREET) (R)66'


 (U.S. SURVEY FEET)
 1 inch = 50'

BEARINGS ARE BASED ON THE WYOMING COORDINATE SYSTEM NAD 1983, EAST-CENTRAL ZONE. DISTANCES AND COORDINATES ARE MULTIPLIED FROM STATE PLANE TO SURFACE BY THE DATUM ADJUSTMENT FACTOR OF 1.0002467




$\Delta=12^{\circ}35'33''$
 $R=2799.09'$
 $L=615.19'$
 $CB=N07^{\circ}11'33''E$
 $CL=613.95'$

$\Delta=0^{\circ}20'44''$
 $R=2799.09'$
 $L=16.88'$
 $CB=N00^{\circ}43'25''E$
 $CL=16.88'$

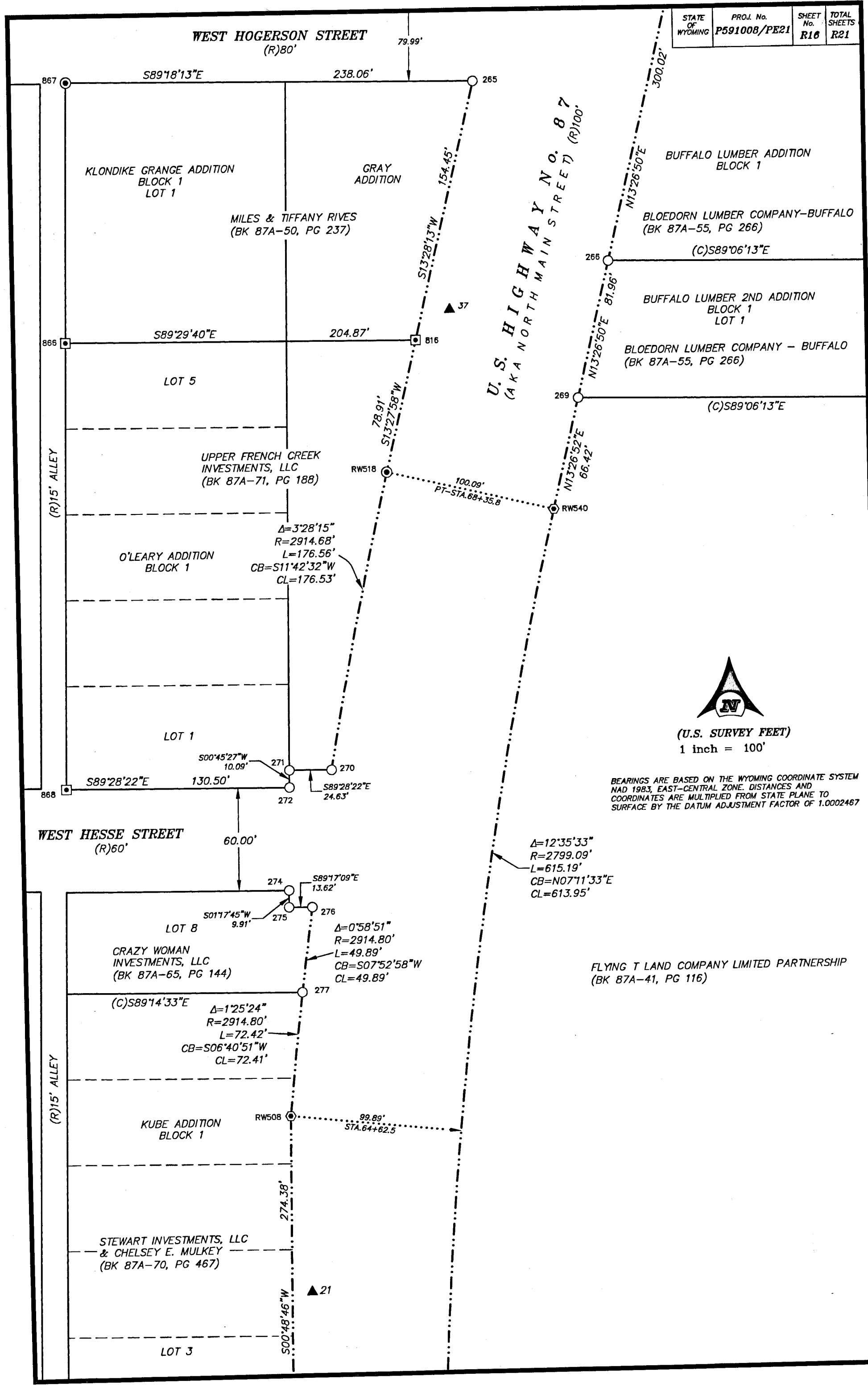
U. S. HIGHWAY No. 16
(AKA EAST HART STREET)


U. S. HIGHWAY No. 87
(AKA NORTH MAIN STREET) (R)66'


 (U.S. SURVEY FEET)
 1 inch = 50'

BEARINGS ARE BASED ON THE WYOMING COORDINATE SYSTEM NAD 1983, EAST-CENTRAL ZONE. DISTANCES AND COORDINATES ARE MULTIPLIED FROM STATE PLANE TO SURFACE BY THE DATUM ADJUSTMENT FACTOR OF 1.0002467

STATE OF WYOMING	PROJ. No. P591008/PE21	SHEET No. R16	TOTAL SHEETS R21
------------------	------------------------	---------------	------------------




 (U.S. SURVEY FEET)
 1 inch = 100'

BEARINGS ARE BASED ON THE WYOMING COORDINATE SYSTEM NAD 1983, EAST-CENTRAL ZONE. DISTANCES AND COORDINATES ARE MULTIPLIED FROM STATE PLANE TO SURFACE BY THE DATUM ADJUSTMENT FACTOR OF 1.0002467

$\Delta=12^{\circ}35'33''$
 $R=2799.09'$
 $L=615.19'$
 $CB=N07^{\circ}11'33''E$
 $CL=613.95'$

FLYING T LAND COMPANY LIMITED PARTNERSHIP
(BK 87A-41, PG 116)

WEST HOGERSON STREET
(R)80'

867 $S89^{\circ}18'13''E$ 238.06' 265

KLONDIKE GRANGE ADDITION
BLOCK 1
LOT 1

GRAY
ADDITION

MILES & TIFFANY RIVES
(BK 87A-50, PG 237)

BUFFALO LUMBER ADDITION
BLOCK 1

BLOEDORN LUMBER COMPANY-BUFFALO
(BK 87A-55, PG 266)

(C) $S89^{\circ}06'13''E$

BUFFALO LUMBER 2ND ADDITION
BLOCK 1
LOT 1

BLOEDORN LUMBER COMPANY - BUFFALO
(BK 87A-55, PG 266)

(C) $S89^{\circ}06'13''E$

866 $S89^{\circ}29'40''E$ 204.87' 816

LOT 5

UPPER FRENCH CREEK
INVESTMENTS, LLC
(BK 87A-71, PG 188)

O'LEARY ADDITION
BLOCK 1

$\Delta=3^{\circ}28'15''$
 $R=2914.68'$
 $L=176.56'$
 $CB=S11^{\circ}42'32''W$
 $CL=176.53'$

LOT 1

868 $S89^{\circ}28'22''E$ 130.50' 271 270 272 $S89^{\circ}28'22''E$ 24.63'

WEST HESSE STREET
(R)60'

60.00' 274 $S89^{\circ}17'09''E$ 13.62' 276

LOT 8

CRAZY WOMAN
INVESTMENTS, LLC
(BK 87A-65, PG 144)

$\Delta=0^{\circ}58'51''$
 $R=2914.80'$
 $L=49.89'$
 $CB=S07^{\circ}52'58''W$
 $CL=49.89'$

(C) $S89^{\circ}14'33''E$

$\Delta=1^{\circ}25'24''$
 $R=2914.80'$
 $L=72.42'$
 $CB=S06^{\circ}40'51''W$
 $CL=72.41'$

KUBE ADDITION
BLOCK 1

RW508 99.89' 57A.64+62.5

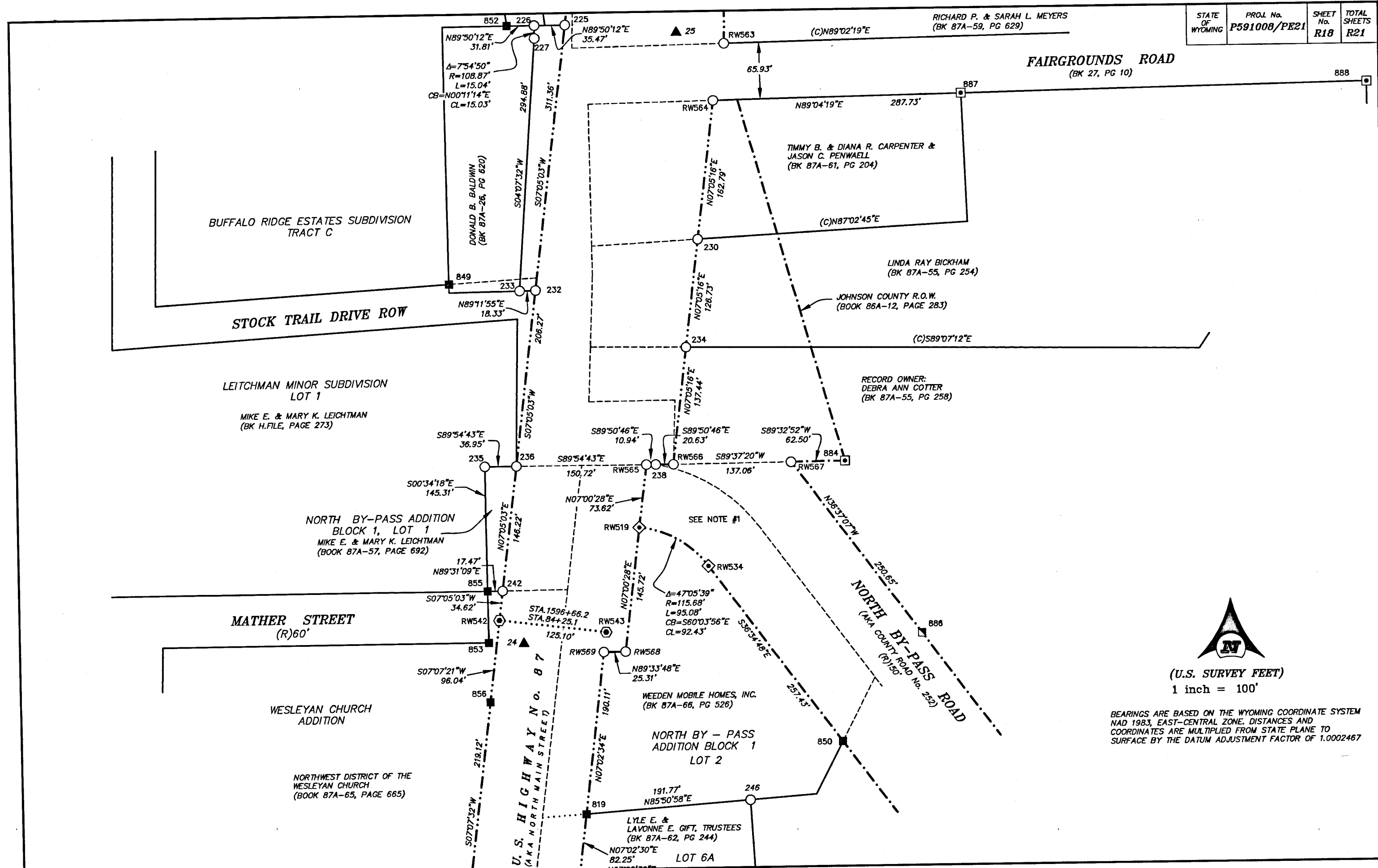
STEWART INVESTMENTS, LLC
& CHELSEY E. MULKEY
(BK 87A-70, PG 467)

274.38'

LOT 3

$S00^{\circ}48'46''W$
 $\blacktriangle 21$

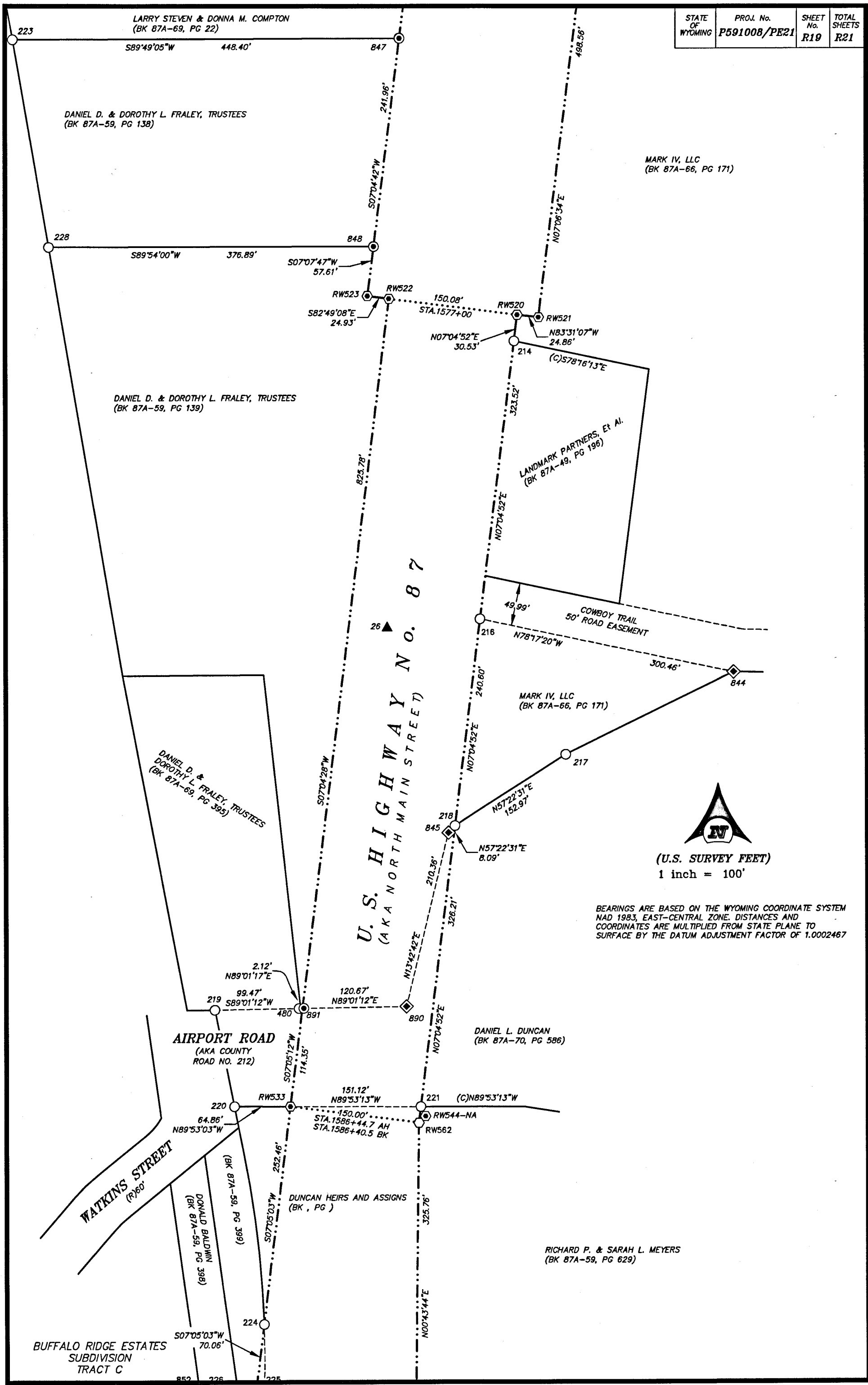
STATE OF WYOMING	PROJ. No. P591008/PE21	SHEET No. R18	TOTAL SHEETS R21
------------------	------------------------	---------------	------------------



(U.S. SURVEY FEET)
1 inch = 100'

BEARINGS ARE BASED ON THE WYOMING COORDINATE SYSTEM NAD 1983, EAST-CENTRAL ZONE. DISTANCES AND COORDINATES ARE MULTIPLIED FROM STATE PLANE TO SURFACE BY THE DATUM ADJUSTMENT FACTOR OF 1.0002467

STATE OF WYOMING	PROJ. No. P591008/PE21	SHEET No. R19	TOTAL SHEETS R21
------------------	------------------------	---------------	------------------



U. S. HIGHWAY No. 87
 (AKA NORTH MAIN STREET)



(U.S. SURVEY FEET)
1 inch = 100'

BEARINGS ARE BASED ON THE WYOMING COORDINATE SYSTEM NAD 1983, EAST-CENTRAL ZONE. DISTANCES AND COORDINATES ARE MULTIPLIED FROM STATE PLANE TO SURFACE BY THE DATUM ADJUSTMENT FACTOR OF 1.0002467

DANIEL D. & DOROTHY L. FRALEY, TRUSTEES
(BK 87A-59, PG 138)

MARK IV, LLC
(BK 87A-66, PG 171)

DANIEL D. & DOROTHY L. FRALEY, TRUSTEES
(BK 87A-59, PG 139)

LANDMARK PARTNERS, ET AL.
(BK 87A-49, PG 196)

DANIEL D. & DOROTHY L. FRALEY, TRUSTEES
(BK 87A-69, PG 395)

MARK IV, LLC
(BK 87A-66, PG 171)

DANIEL L. DUNCAN
(BK 87A-70, PG 586)

RICHARD P. & SARAH L. MEYERS
(BK 87A-59, PG 629)

BUFFALO RIDGE ESTATES
SUBDIVISION
TRACT C

AIRPORT ROAD
(AKA COUNTY ROAD NO. 212)

WATKINS STREET
(R)160'

DONALD BALDWIN
(BK 87A-59, PG 398)

DUNCAN HEIRS AND ASSIGNS
(BK , PG)



(U.S. SURVEY FEET)
1 inch = 100'

BEARINGS ARE BASED ON THE WYOMING COORDINATE SYSTEM NAD 1983, EAST-CENTRAL ZONE. DISTANCES AND COORDINATES ARE MULTIPLIED FROM STATE PLANE TO SURFACE BY THE DATUM ADJUSTMENT FACTOR OF 1.0002467

U. S. HIGHWAY No. 87
(AKA NORTH MAIN STREET)

MATHER PEAK HOLDINGS, LLC
(BK 87A-70, PG 651)

NEW LIFE ASSEMBLY OF GOD
(BK 87A-48, PG 249)

BARSTAD SUBDIVISION
LOT 1

BRADLEY ALAN & LISA FOX
(BK 87A-72, PG 232)

BARSTAD SUBDIVISION
LOT 2

NORTH PLAINS WAY
(R)60'

LOREN CARLAT
(BK H.FILE PG 523)

NORTHERN PLAINS SUBDIVISION
LOT 1

210 — S89°54'55"W 303.56' — 841

HERBERT M. & GERRI L. MILLER
(BK 87A-69, PG 206)

211 — N64°09'28"W 229.76' — RW527
RW527 — S07°03'57"W 407.37' — 841
LARRY STEVEN & DONNA M. COMPTON
(BK 87A-69, PG 22)

200.11' STA. 1572+00
RW526 — S82°46'54"E 24.75' — RW524
RW524 — S83°05'30"E 24.93' — RW525
RW525 — N07°06'34"E 60.07' — 846

840 — S89°32'37"E 527.64' — 206
206 — N07°03'32"E 60.66' — 839
839 — S89°33'57"E 471.86' — 205

838 — N88°45'26"E 492.49' — 207

836 — N88°44'21"E 512.40' — 208

837 — S07°05'01"W 60.46' — 209
837 — N88°45'32"E 521.17' — 209

835 — N88°45'30"E 516.53' — 212

LOREN CARLAT
(BK H.FILE PG 523)



207°05'03"E 424.73'
207°05'03"E 350.30'

846 — N84°24'35"E 169.07' — 213
MARK IV, LLC
(BK 87A-66, PG 171)

199.10' — N07°04'12"E

S07°05'20"W

1781.44'



STATE OF WYOMING	PROJ. No. P591008/PE21	SHEET No. R21	TOTAL SHEETS R21
------------------	------------------------	---------------	------------------

INTERSTATE - 90

RW532 STA.1790+95
 N89°49'35"E 64.84'
 RW531
 S107°25'E 8.48'
 RW530 STA.1541+26.5

RW578

$\Delta=12^{\circ}48'16''$
 $R=2739.79'$
 $L=612.29'$
 $CB=S02^{\circ}08'25''E$
 $CL=611.02'$

(R) CURVE
 $I=30^{\circ}27'R$
 $Ic=24^{\circ}51'$
 $D=2^{\circ}00'$
 $Ta=779.75'$
 $Lc=1242.5'$
 $T=920.1'$

$\Delta=11^{\circ}02'56''$
 $R=2989.79'$
 $L=576.55'$
 $CB=N01^{\circ}14'25''W$
 $CL=575.65'$

MATHER PEAK HOLDINGS, LLC
 (BK 87A-70, PG 651)

RW553 STA.1799+48.4

RW554 STA.1800+46.7

RW579 249.88' STA.1547+28.9 C.S. RW580

SPIRAL CHORD BEARING & LENGTH
 S06°08'21"W 273.86'

(R) SPIRAL
 $I_s=2^{\circ}48'$
 $T_s=140.0'$
 $L_s=280.0'$
 $O=1.14'$

SPIRAL CHORD BEARING & LENGTH
 N06°08'27"E 286.08'

GOBLE FAMILY HOLDINGS, LLC
 (BK 87A-61, PG 138)

RW529 249.78' STA.1550+08.9 S.T. RW528

U. S. HIGHWAY No. 87
 (AKA NORTH MAIN STREET)



(U.S. SURVEY FEET)
 1 inch = 100'

BEARINGS ARE BASED ON THE WYOMING COORDINATE SYSTEM NAD 1983, EAST-CENTRAL ZONE. DISTANCES AND COORDINATES ARE MULTIPLIED FROM STATE PLANE TO SURFACE BY THE DATUM ADJUSTMENT FACTOR OF 1.0002467

S07°05'20"W 1781.44'

N07°05'03"E 409.86'

▲ 29

203 (C)N89°49'06"E

N07°05'18"E 316.15'

THE J & C CLARK FAMILY TRUST
 (BK 87A-55, PG 490)