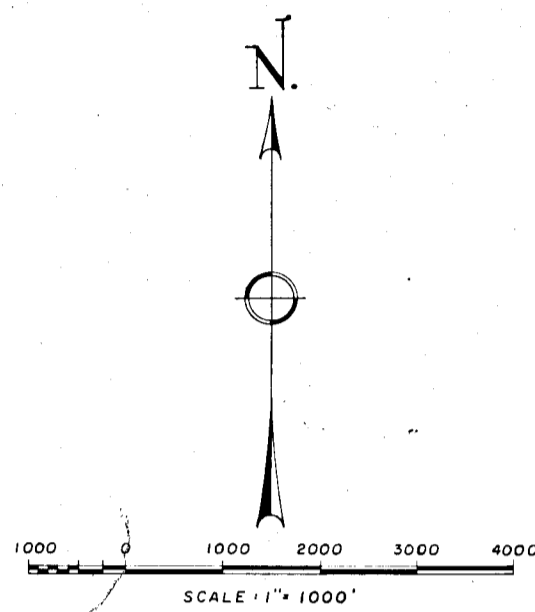


DEPENDENT RESURVEY OF A PORTION OF TOWNSHIP NO. 41 NORTH, RANGE NO. 80 WEST OF SIXTH PRINCIPAL MERIDIAN, WYOMING.

T. 42 N.
T. 41 N.

T. 42 N.
T. 41 N.



EXPLANATION

- U.S. GOVERNMENT CORNERS:
 Brass Cap, Resurvey O
 Stone, Original Survey ●
- W. L. & A. CORNERS, Brass Caps:
 Original Stone Corner Position □
 Reestablished Corner Position △
 Proportionate Resurvey Position ■
- LINES:
 Dependent Resurvey - - - - -
 Tie Lines - - - - -
 Protraction - - - - -
 Survey, Sectional Subdivision - - - - -

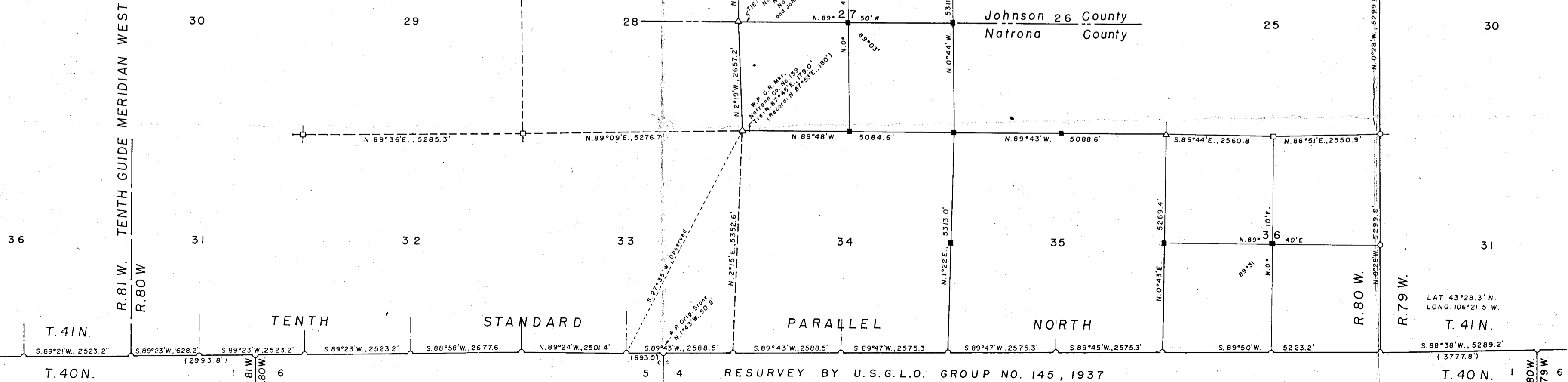
CERTIFICATE OF CADASTRAL ENGINEER

I, E. C. Lenhart of Casper, Wyoming hereby certify that this plat was prepared from notes taken during an actual survey made by me, commenced on February 24th, 1964 and completed on April 22nd, 1964 and from the records of the United States Department of the Interior, Bureau of Land Management; and that this resurvey of portions of Township No. 41 North, Range No. 80 W. of the Sixth Principal Meridian, Wyoming, delineates a retracement and reestablishment of the lines of the original survey, approved March 31, 1883, in their true original position according to the best available evidence of the position of the original corners; and that said resurvey was made in strict conformity with the Manual of Instructions for the Survey of the Public Lands of the United States, and that this plat and the accompanying field notes, which are made a part hereof, are true and correct to the best of my knowledge and belief.

WYOMING REGISTRATION NO. 520
 Professional Engineer & Land Surveyor
 DATED: April 27th, 1964.

E. C. Lenhart
 E. C. LENHART

PLAT and SURVEY
 WORTHINGTON, LENHART & ASSOC., INC.
 200 South Lowell Street
 CASPER, WYOMING
 W. O. No. 2-20-84 Book No. 261.



RESURVEY BY U.S.B.L.M. GROUP NO. 223, 1950

RESURVEY BY U.S.G.L.O. GROUP NO. 145, 1937

LAT. 43° 28.3' N.
 LONG. 106° 21.5' W.

T. 41 N.

T. 40 N.